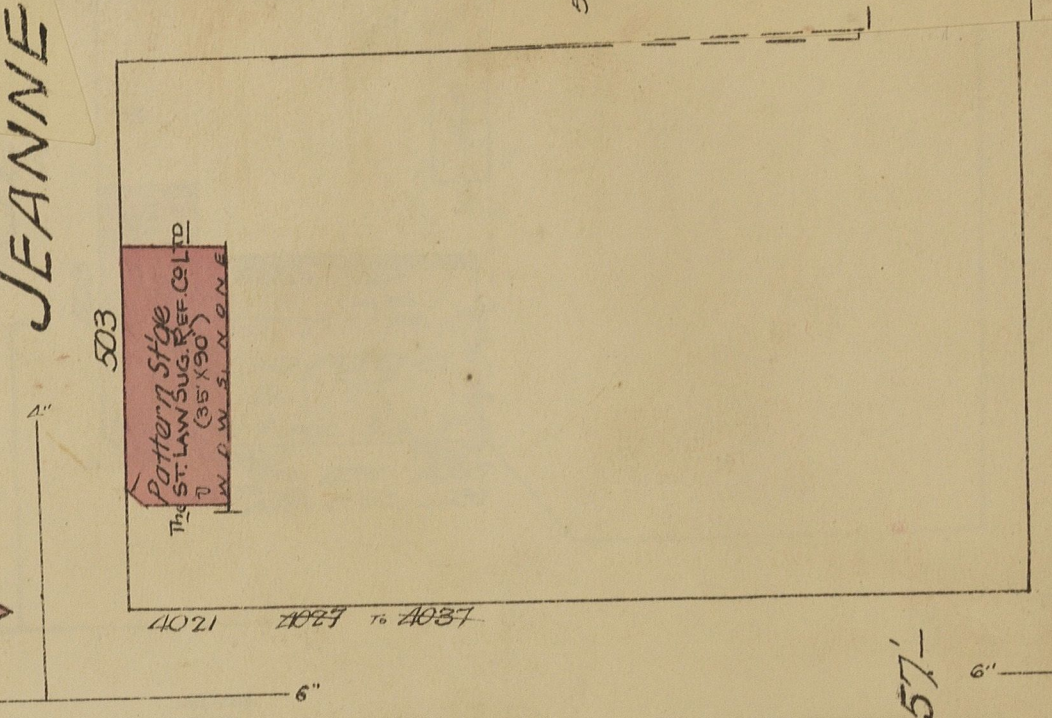
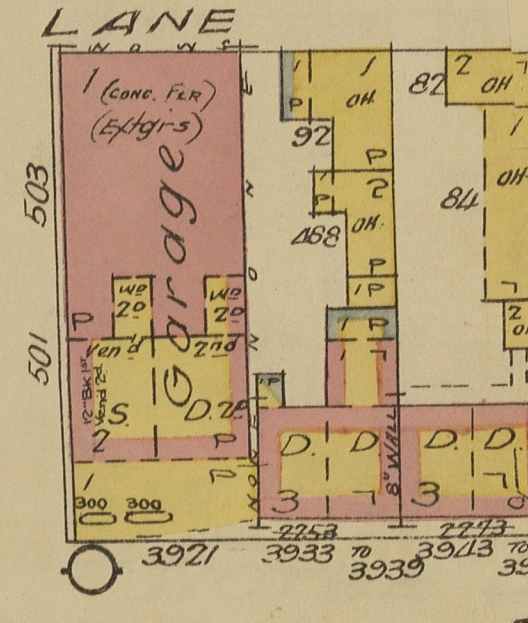
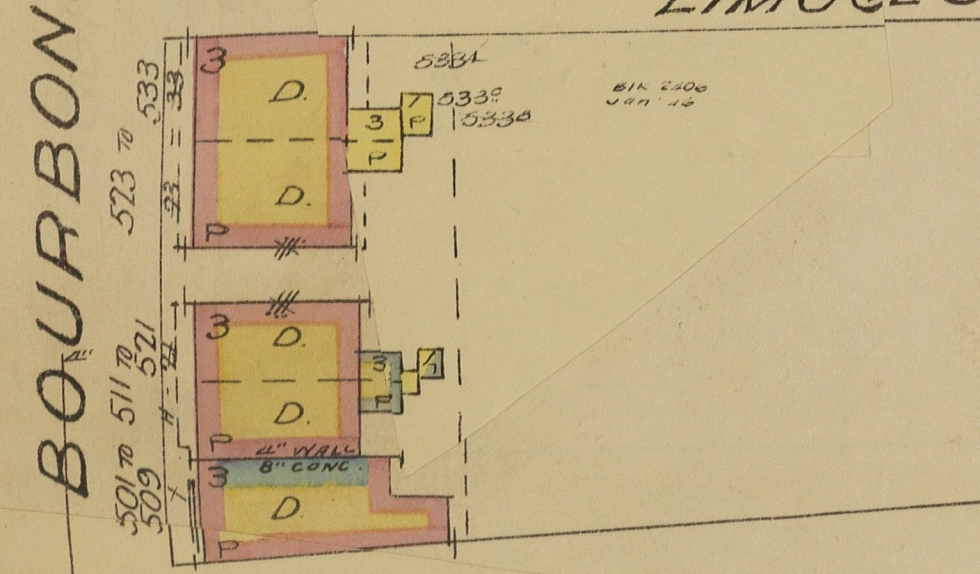
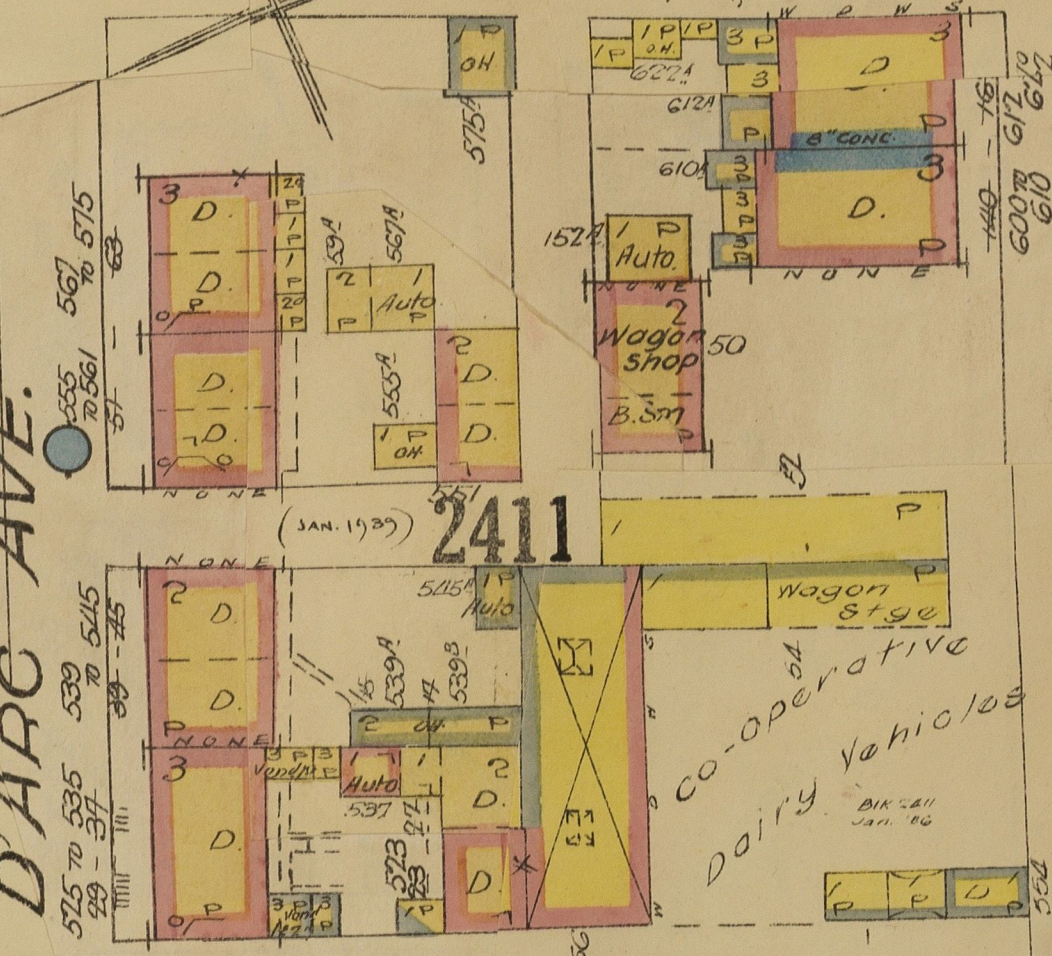
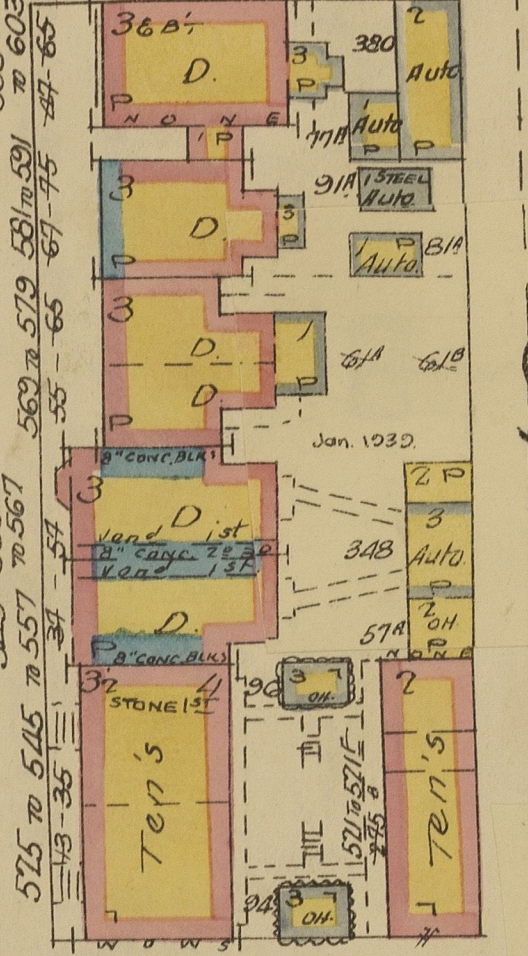
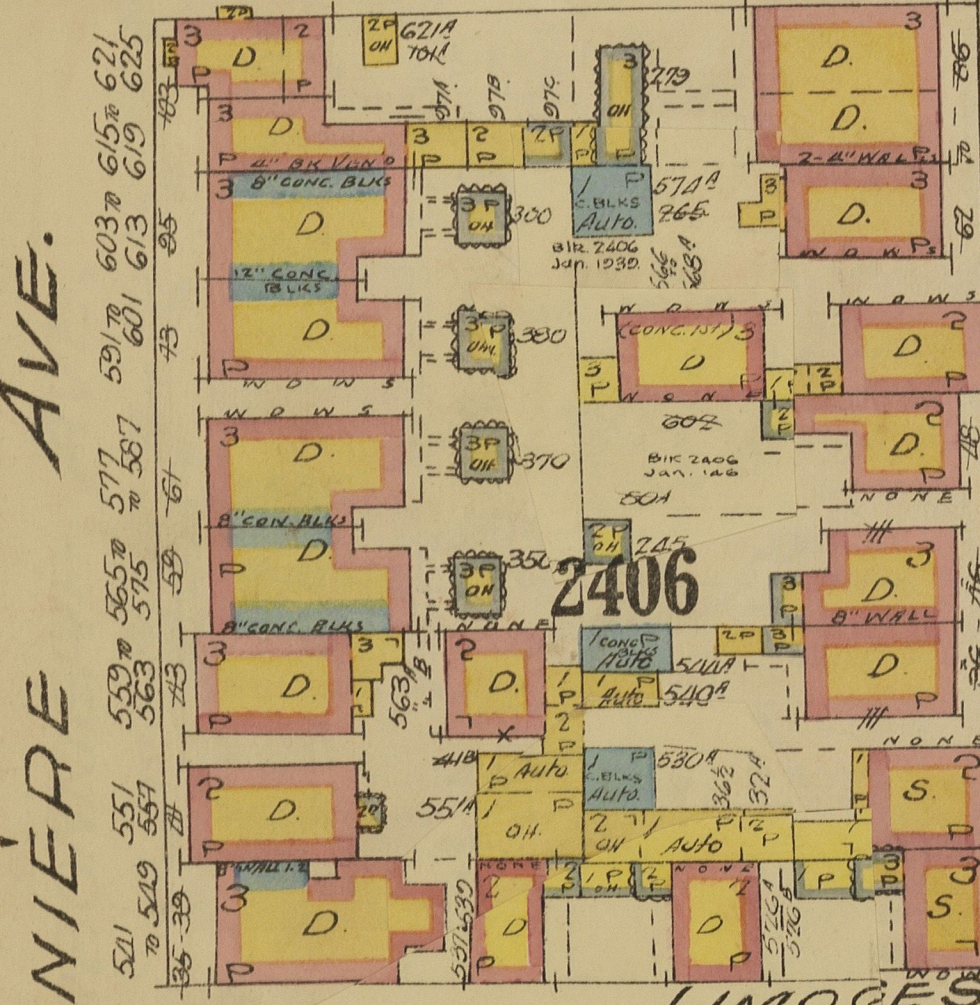
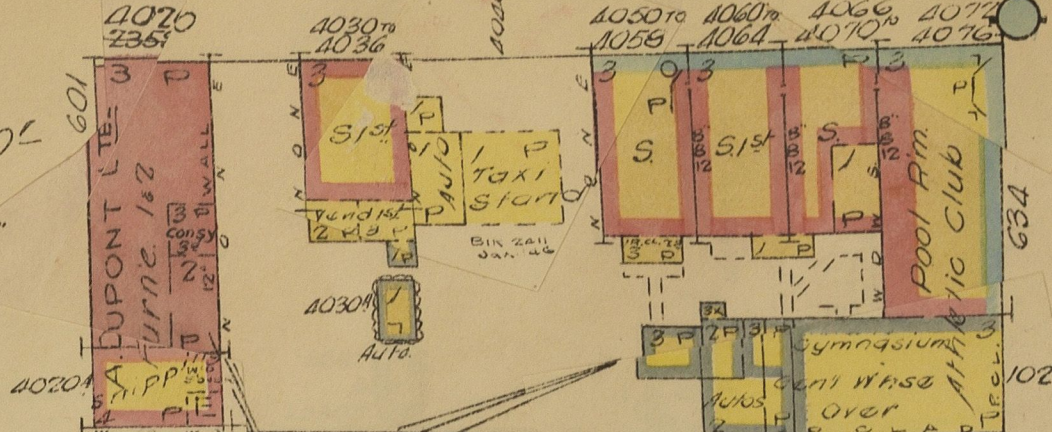
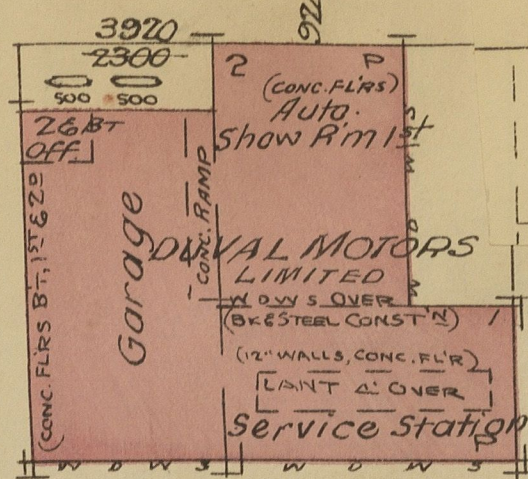
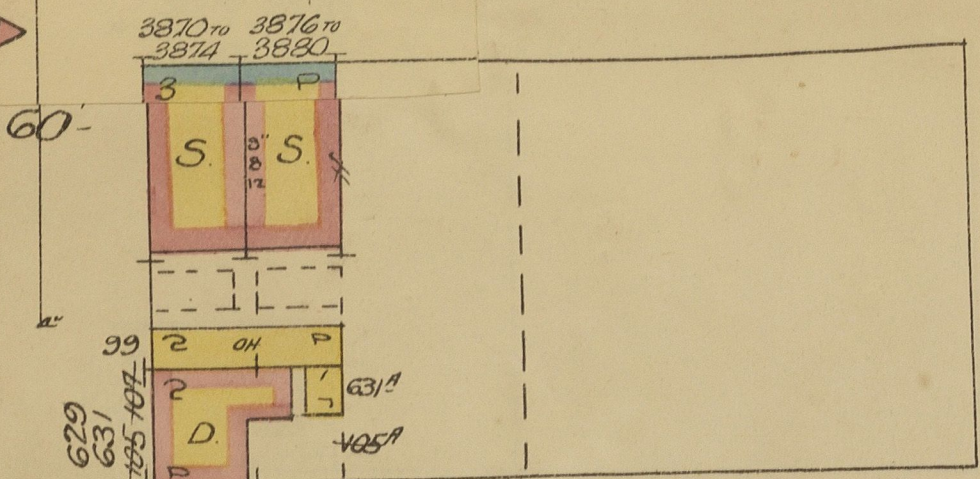


ST. CATHERINE EAST

St. Catherine E.  
Jan. 1932

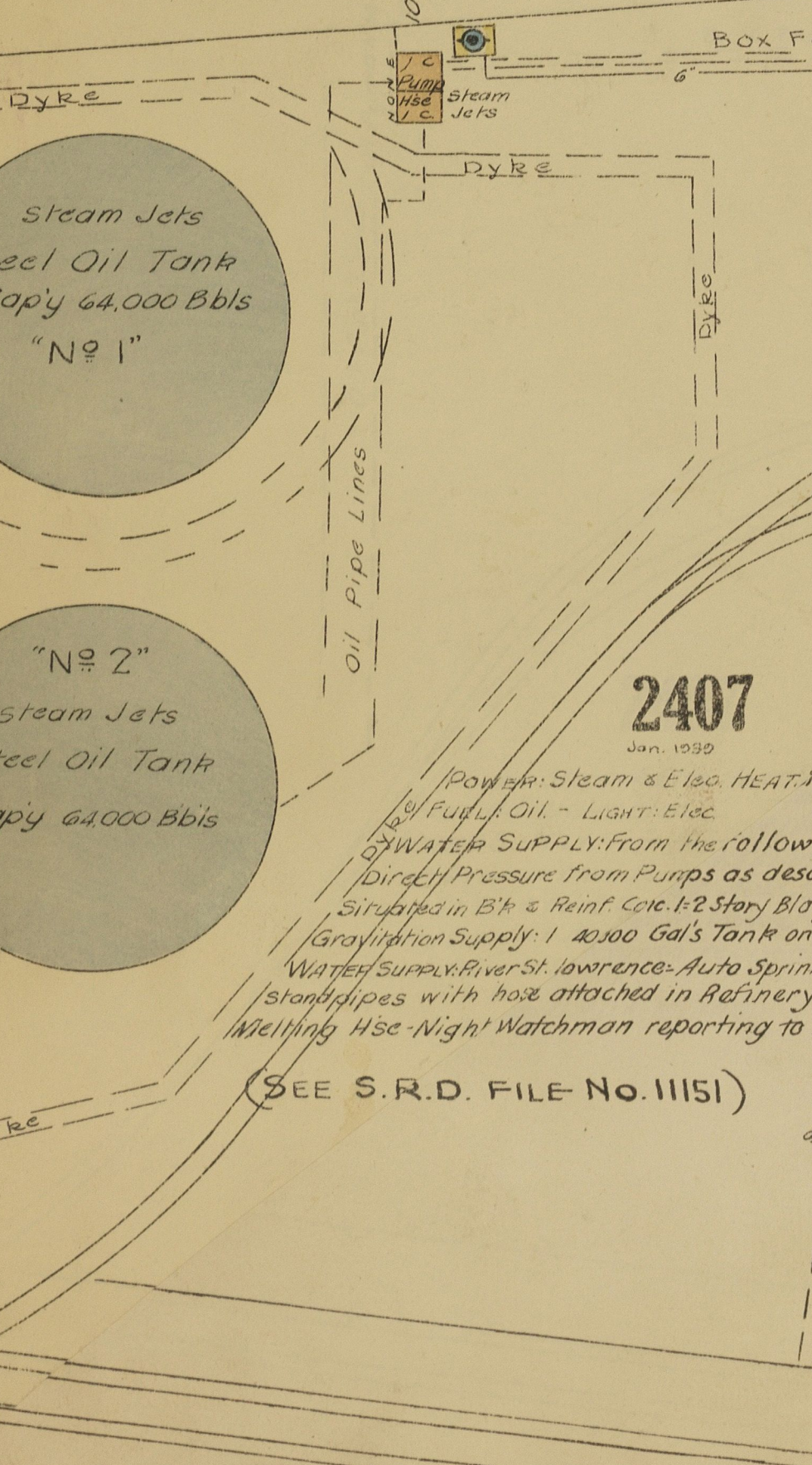
St. Catherine E.  
Jan. 1932



BOURBONNIERE AVE.  
ORLEANS AVE.  
LIMOGES

NOTRE DAME EAST

JEANNE D'ARC AVE.  
PIE IX



SEE SHEET NO. 441  
Steam Jets  
Steel Oil Tank  
Cap'y 64,000 Bbls  
"No 1"

SEE SHEET NO. 441  
LABORATORY  
BAG DRYING  
BAG STORAGE

SEE SHEET NO. 441  
Steam Jets  
Steel Oil Tank  
Cap'y 64,000 Bbls  
"No 2"

SEE SHEET NO. 441  
LABORATORY  
BAG DRYING  
BAG STORAGE

SCALE 50 FT = 1 INCH  
JAN. 1932  
COPYRIGHT REGISTERED AT OTTAWA  
BY THE  
UNDERWRITERS SURVEY BUREAU, LIMITED  
MONTREAL AND TORONTO

HARBOUR COMMISSIONERS RWAY  
SEE SHEET NO. 441  
PUMPS: 1 Underwriters Fire Pump 10 1/2" x 17 1/2" 1,000 Gals per min  
2 Gault & Garrison Service Pumps  
3 De Laval Simplex Stage Centrifugal Service Pumps 1400 Gals Cap'y per min  
by 100 H.P. 550 Volts, A.C. Motors