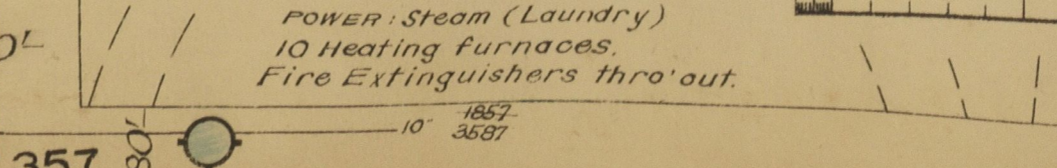
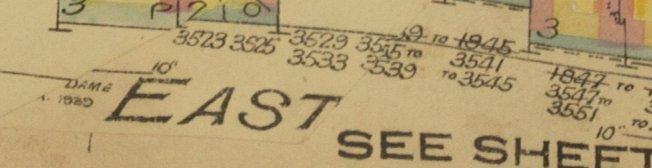
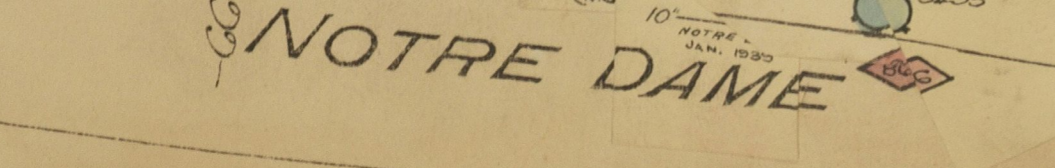
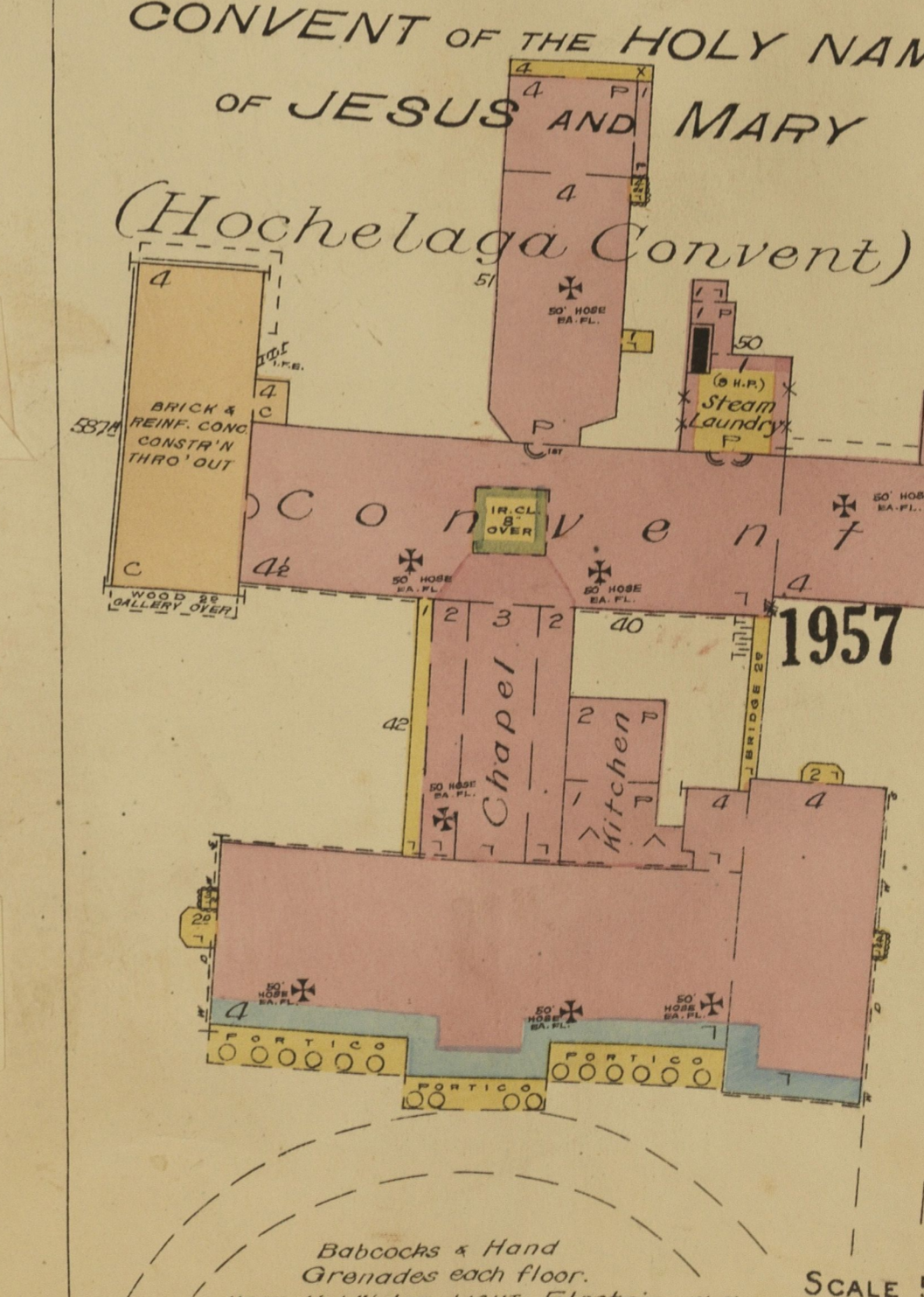
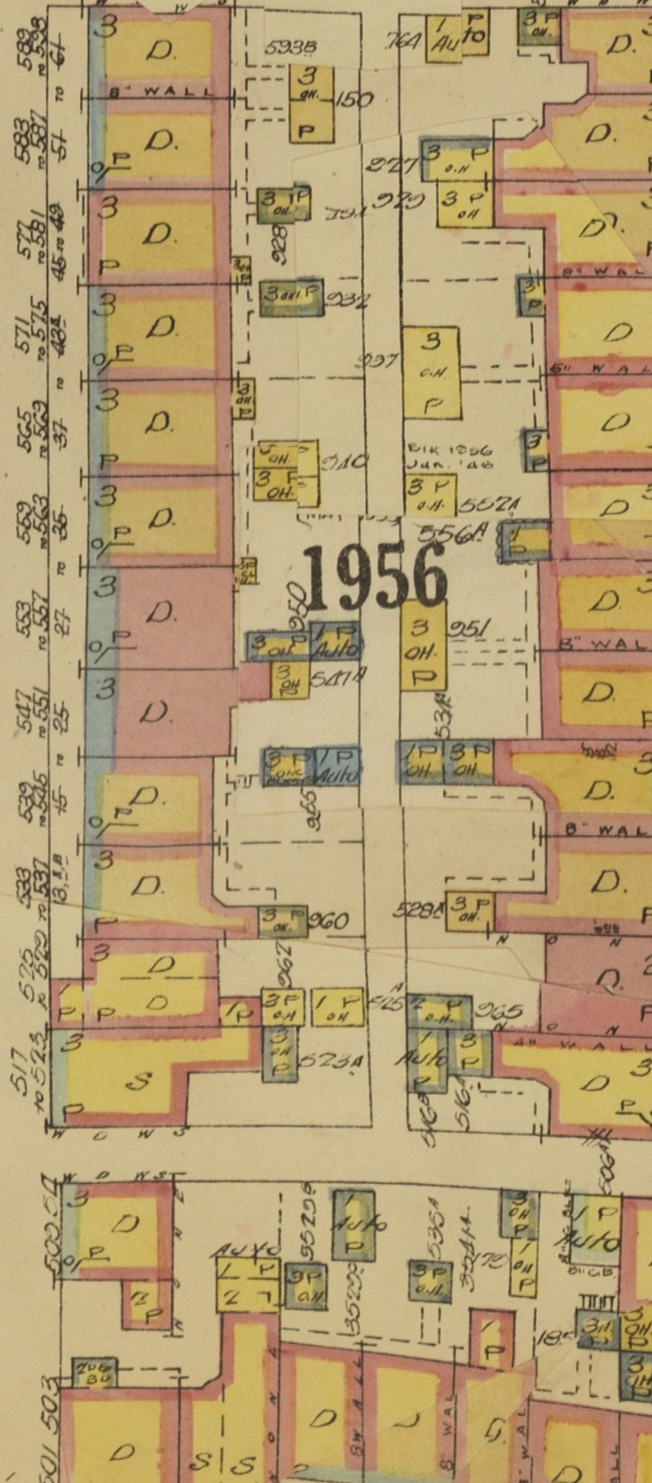
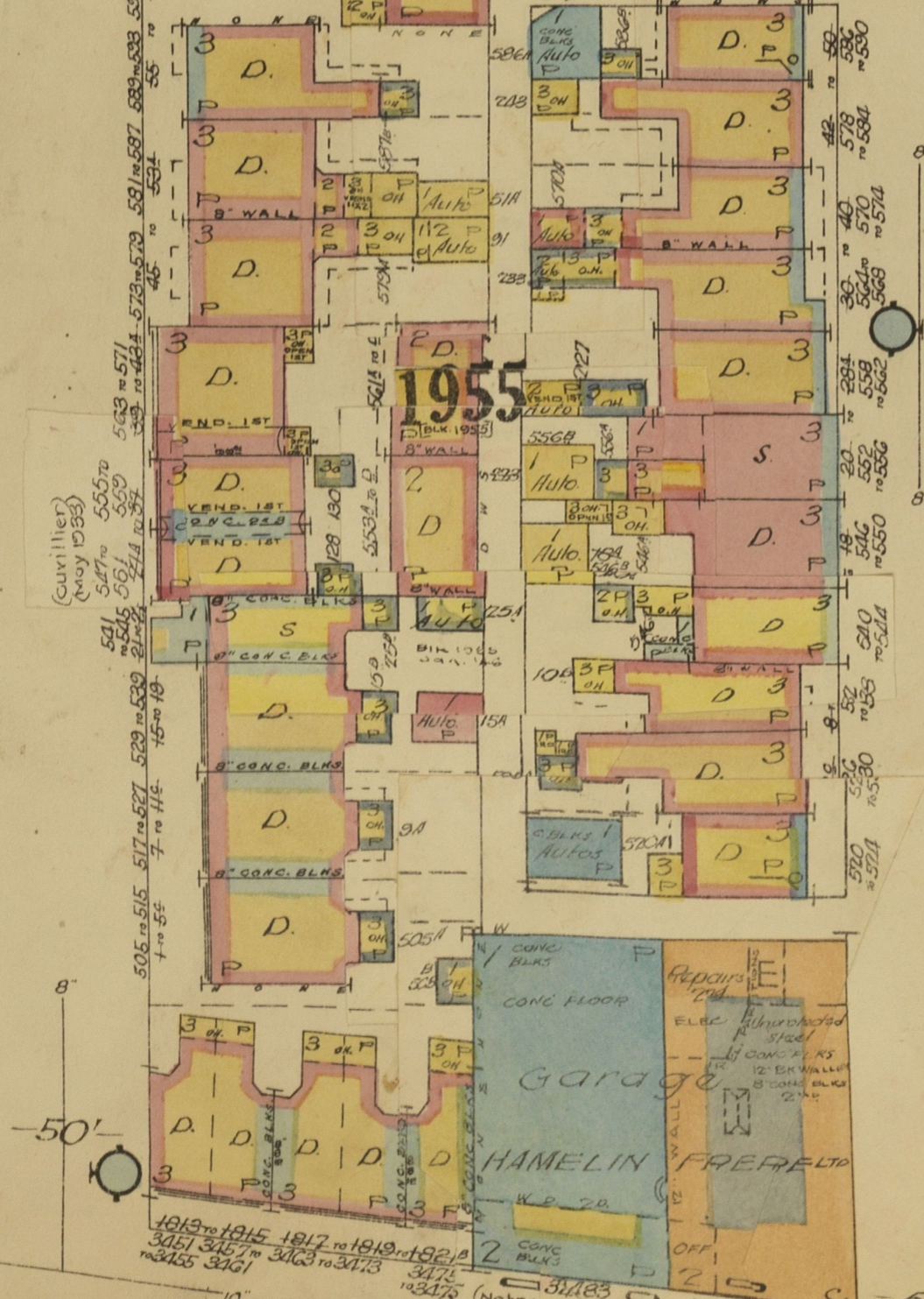
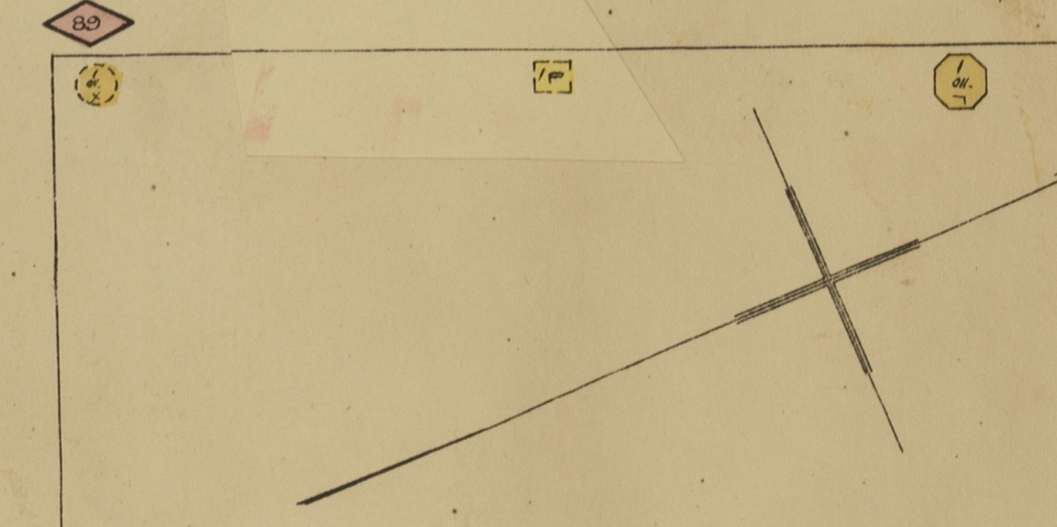
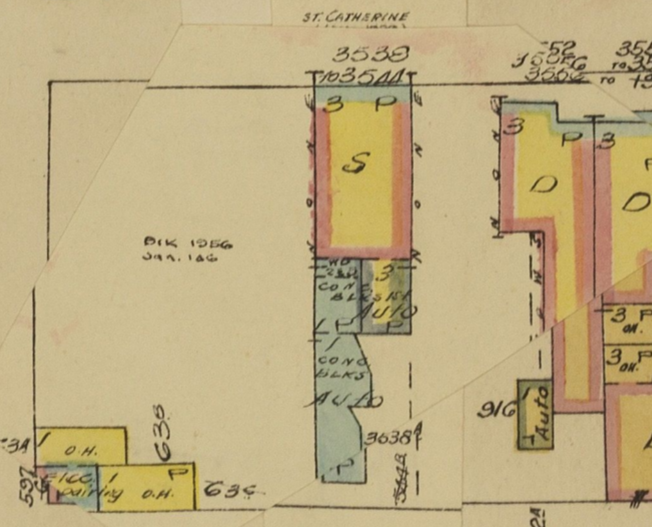
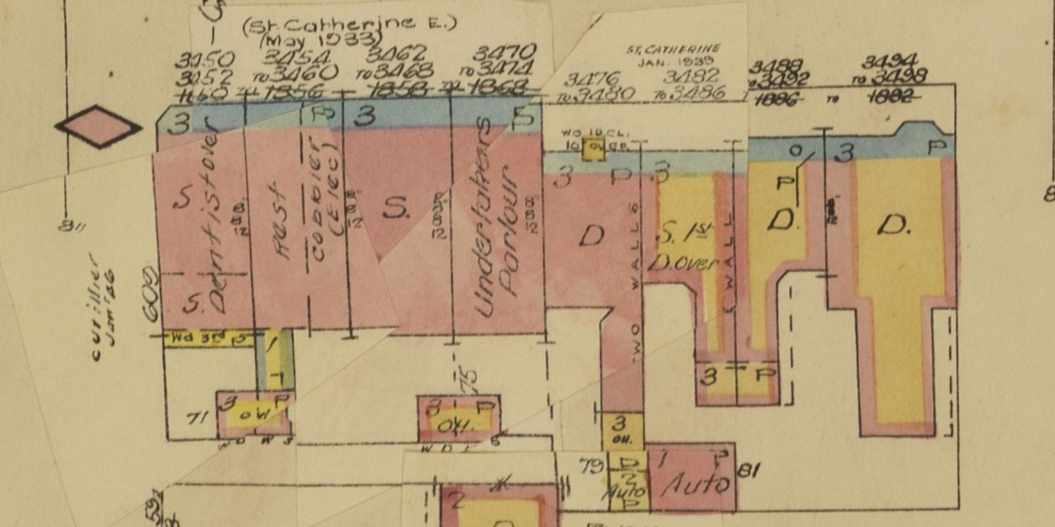
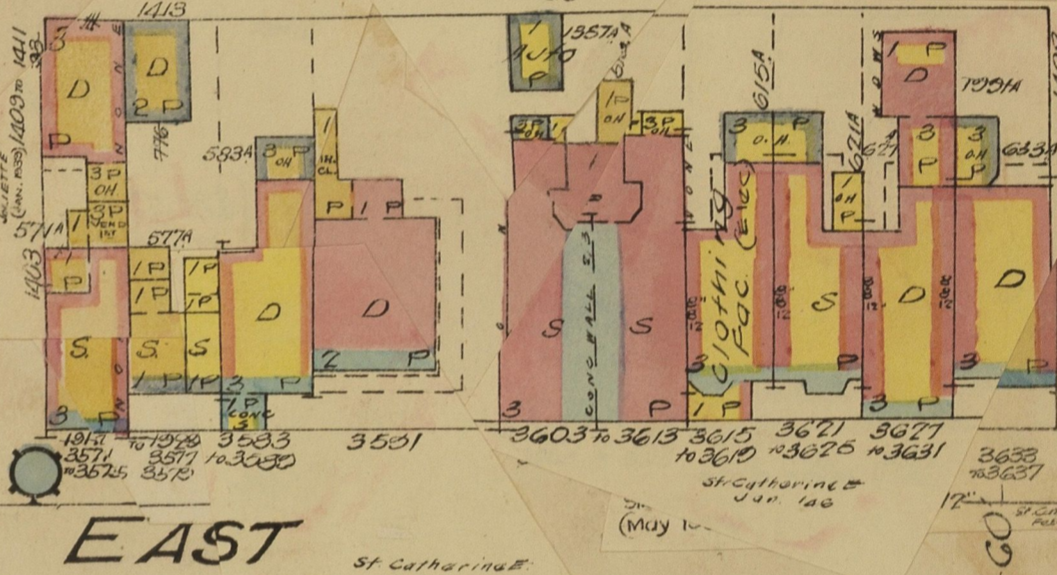
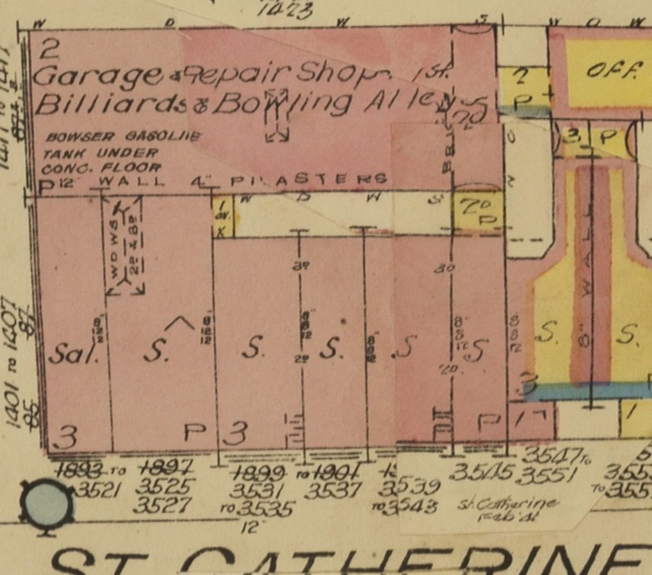
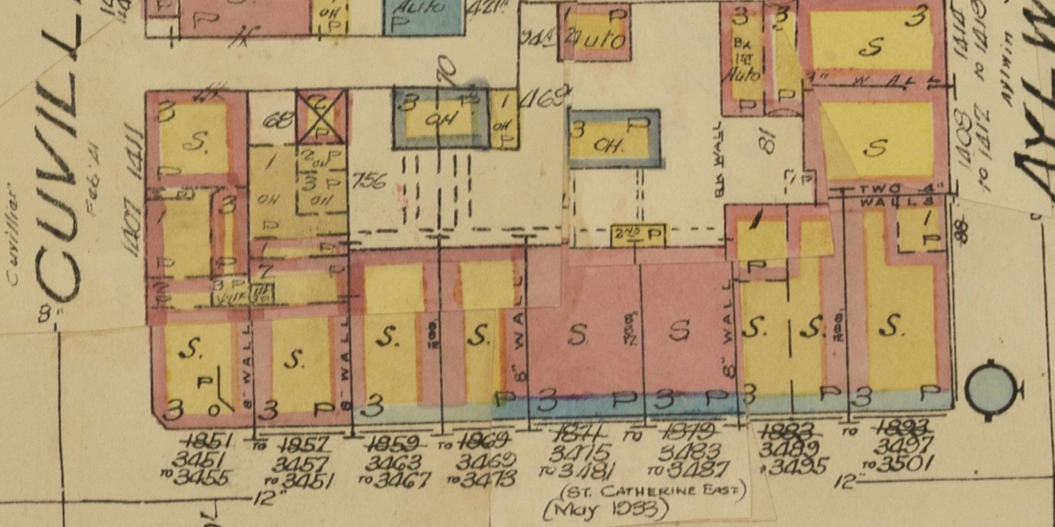
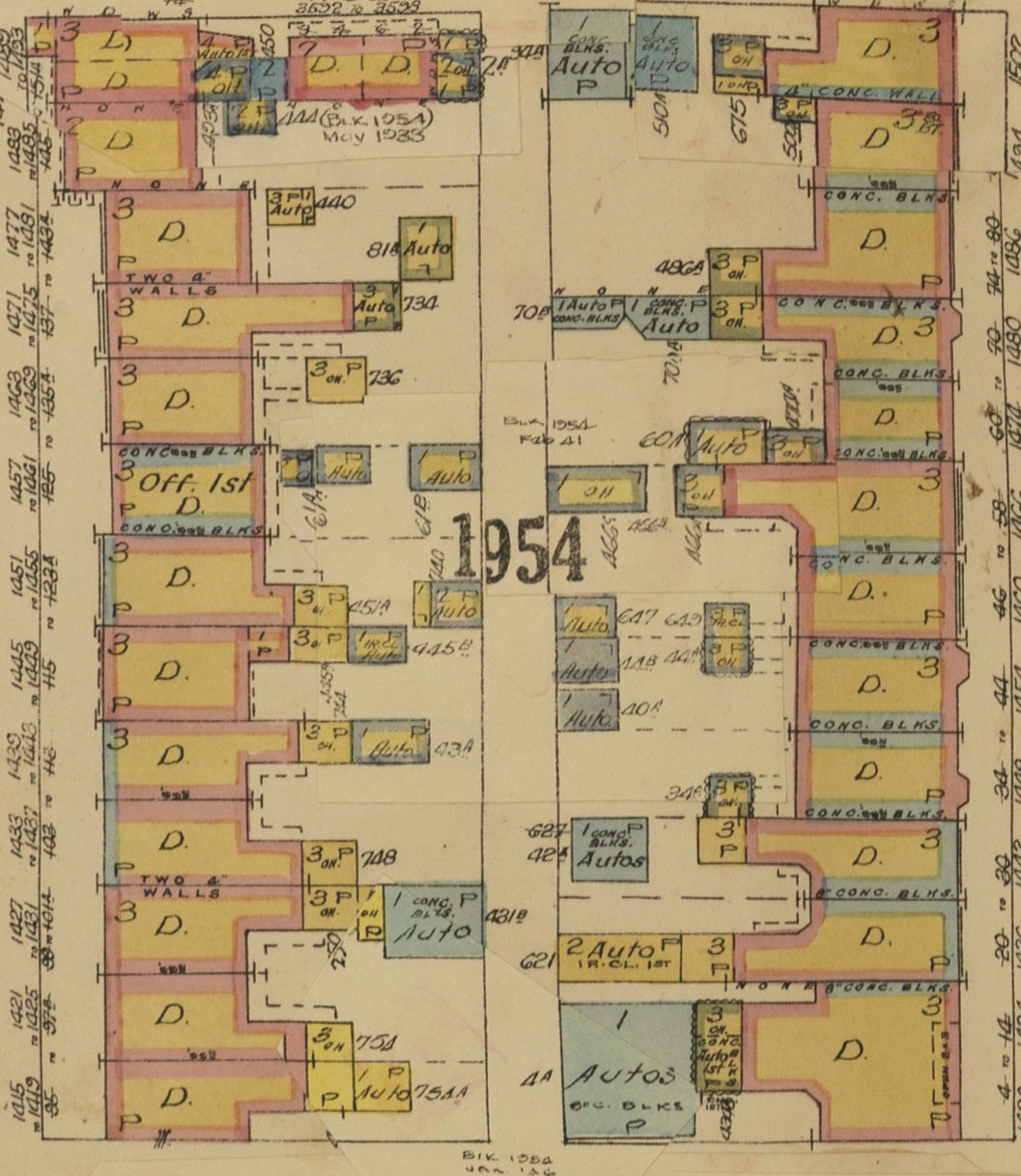
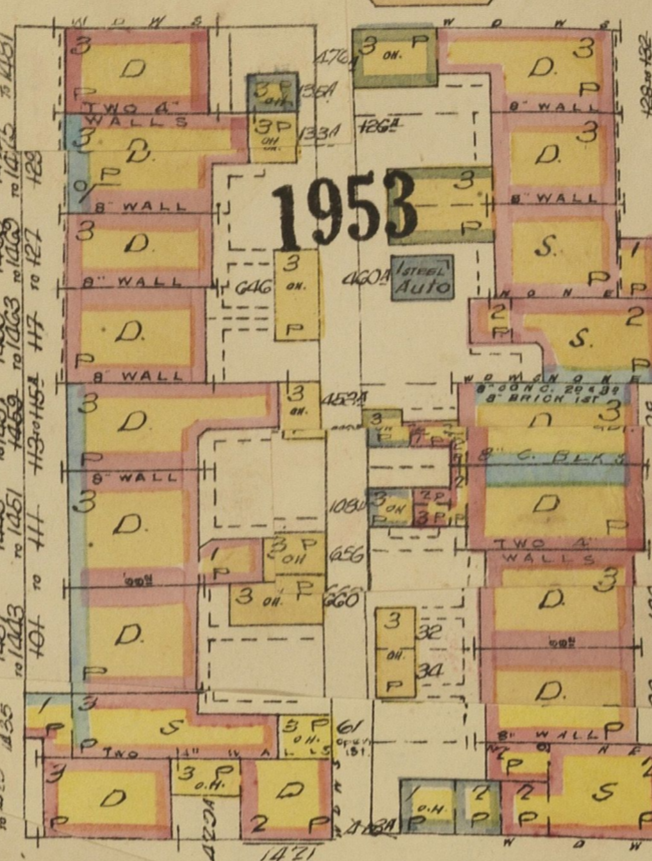
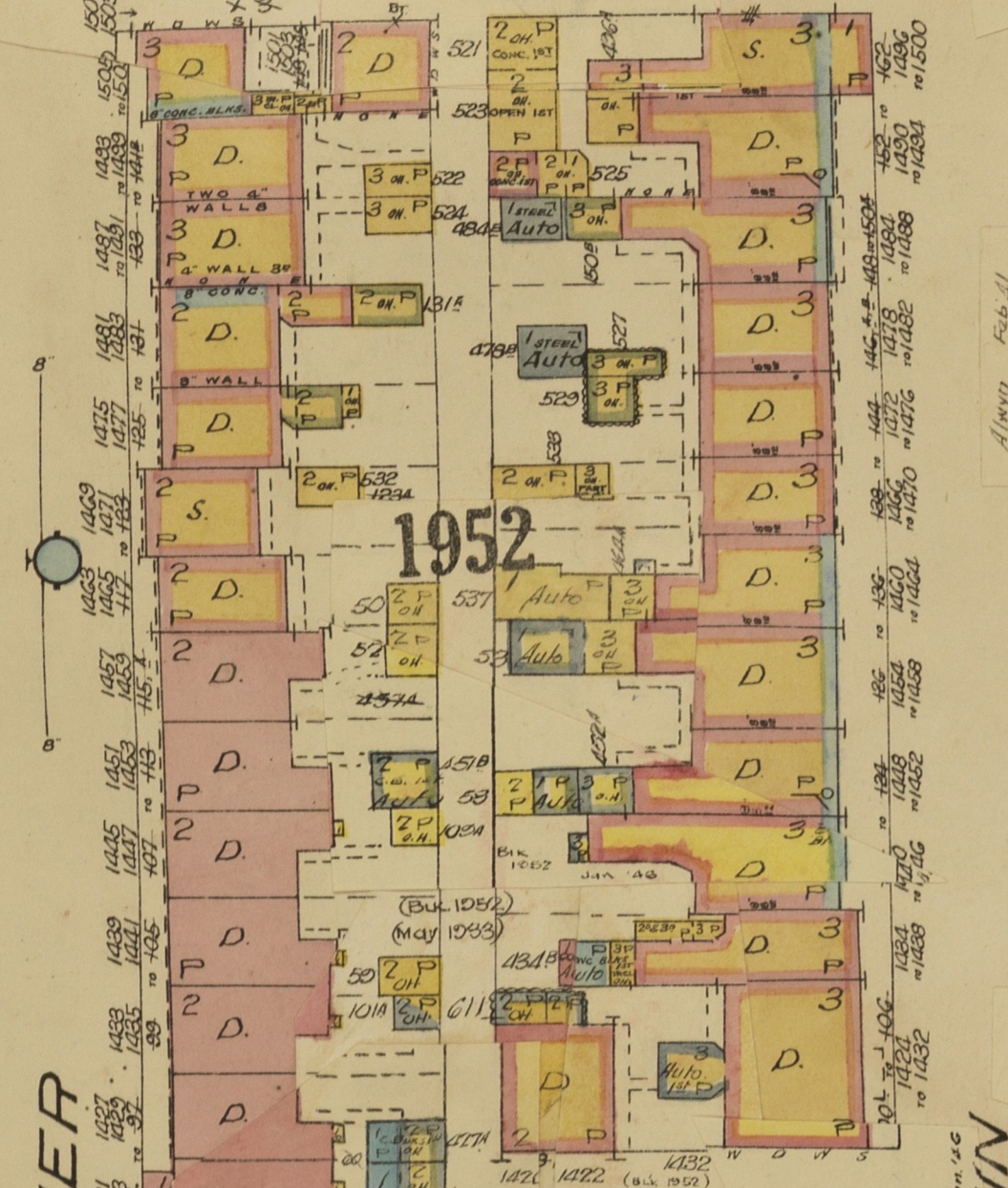
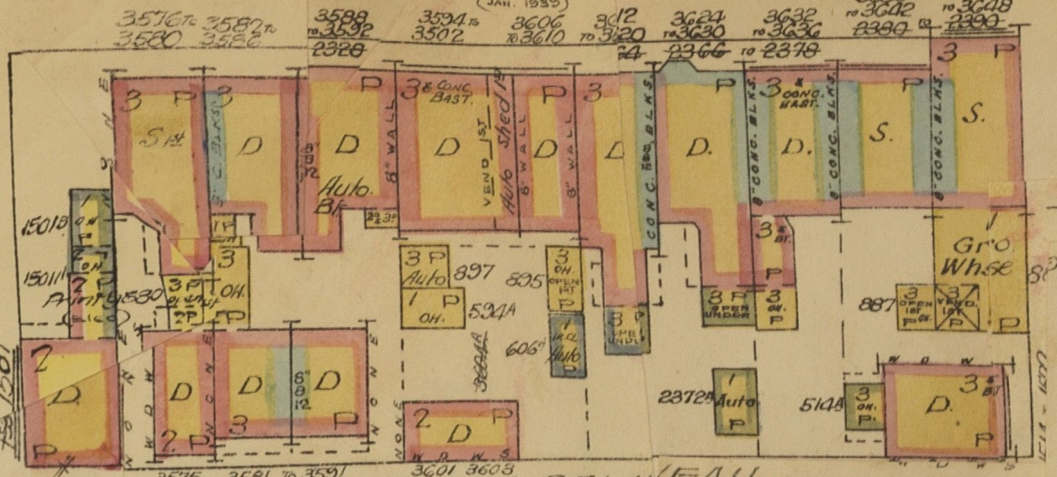
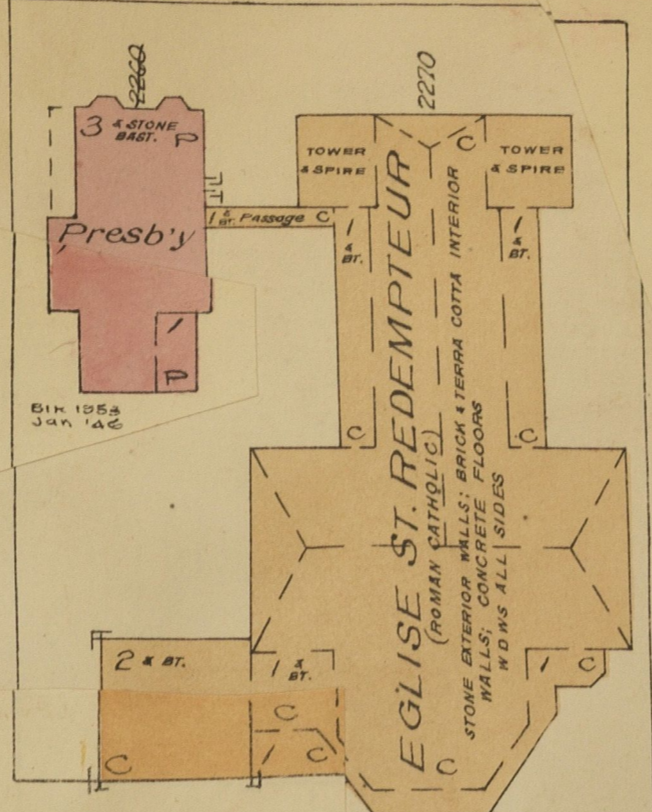
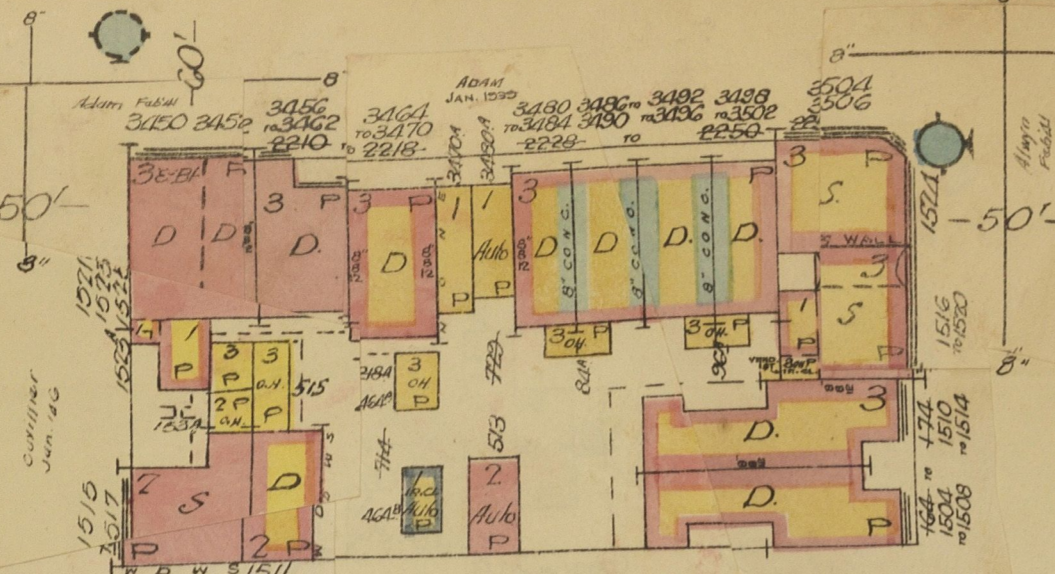


SEE SHEET NO 368

ADAM

MONTREAL VOL. VI  
NOV 1920  
REVISED TO JAN 1946  
COPYRIGHT REGISTERED AT OTTAWA  
BY THE  
UNDERWRITERS SURVEY BUREAU, LIMITED  
MONTREAL AND TORONTO



NOTRE DAME EAST

SEE SHEET NO. 357

Babcocks & Hand  
Grenades each floor.  
HEAT: Hot Water, LIGHT: Electric.  
POWER: Steam (Laundry)  
10 Heating furnaces.  
Fire Extinguishers thro' out.

SCALE 50 FT. = 1 INCH

SEE SHEET NO. 363

SEE SHEET NO. 365

CUVILLIER

AYLWIN

JOLIETTE

CHAMBLY

ST. CATHERINE EAST

EAST

CONVENT OF THE HOLY NAMES  
OF JESUS AND MARY  
(Hochelaga Convent)

Convent  
Chapel  
Kitchen  
Steam Laundry