

## 22 Borough of Saint-Laurent

### Established areas

#### Orientation

##### Maintain area character

Zoning by-laws will aim to maintain the existing built form, which presents the following characteristics:

##### Sector 22-01:

- Building height of one or two stories above ground;
- Medium site coverage.

##### Sector 22-02:

- Building height of two to four stories above ground or a maximum height of 20 meters;
- Medium site coverage.

##### Sector 22-03:

- Building height of two to six stories above ground;
- Low or medium site coverage.

##### Sector 22-04:

- Building height of one or two stories above ground;
- Low or medium site coverage.

##### Sector 22-05:

- Building height of four to six stories above ground;
- Detached;
- Medium site coverage.

##### Sector 22-06:

- Building height of four stories above ground or higher;
- Medium site coverage.
- Maximum F.A.R.: 3.0.

##### Sector 22-07:

- Building height of two to four stories above ground;
- Medium site coverage;

##### Sector 22-08:

- Building height of one to four stories above ground;
- Low or medium site coverage.

##### Sector 22-09:

- Building height of one to four stories above ground;
- Low or medium site coverage.

##### Sector 22-10:

- Building height of one to six stories above ground;
- Low or medium site coverage.

##### Sector 22-11:

- Building height of two or three stories above ground;
- Medium site coverage.

##### Sector 22-12:

- Building height of three to six stories above ground;
- Medium or high site coverage.

##### Sector 22-13:

- Building height of six stories above ground or higher;
- Medium site coverage;
- Maximum F.A.R.: 3.0.

##### Sector 22-14:

- Building height of one or two stories above ground;
- Medium site coverage.

##### Sector 22-15:

- Building height of two stories above ground or higher;
- Medium or high site coverage;
- Maximum F.A.R.: 3.0.

##### Sector 22-16:

- Building height of one to four stories above ground or a maximum height of 20 meters;
- Low or medium site coverage.

##### Sector 22-17:

- Building height of two to six stories above ground;
- Low or medium site coverage.

##### Sector 22-18:

- Building height of one story above ground or higher;
- Low or medium site coverage;
- Maximum F.A.R.: 3.0.

##### Sector 22-19

- Building height of two to ten stories above ground;
- Low or medium site coverage.

## 22 Borough of Saint-Laurent

### Areas to be built or transformed

#### Orientation

##### Renew area character

Zoning by-laws will permit a new built form, which presents the following characteristics:

##### Sector 22-T1:

- Building height of two stories above ground or higher;
- Medium or high site coverage;
- Minimum F.A.R.: 1.0;
- Maximum F.A.R.: 6.0.

##### Sector 22-T2:

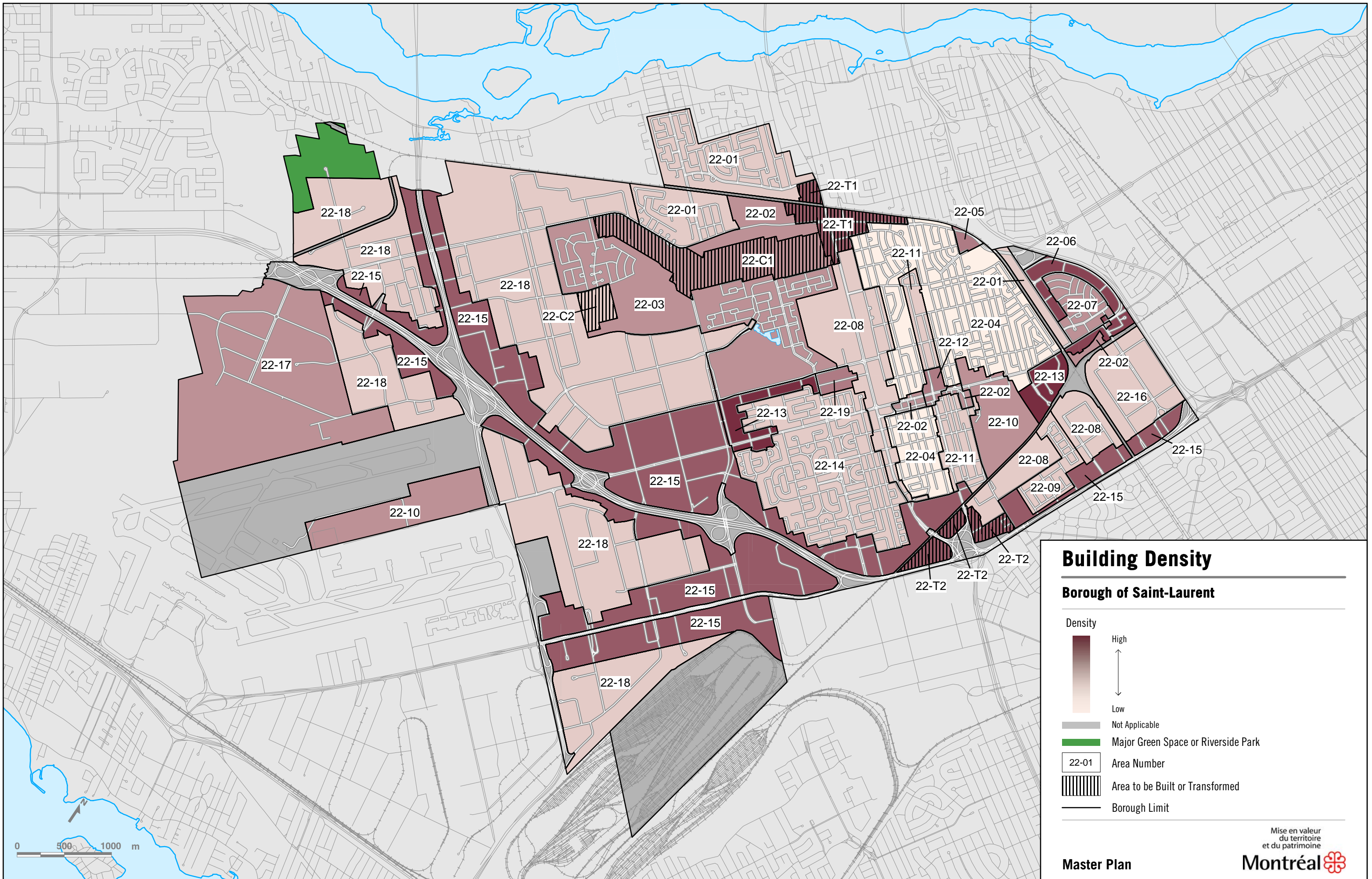
- Building height of three stories above ground or higher;
- Medium or high site coverage;
- Minimum F.A.R.: 1.0;
- Maximum F.A.R.: 6.0.

##### Sector 22-C1:

- Building height of two to six stories above ground;
- Low or medium site coverage;
- Minimum F.A.R.: 0.1;
- Maximum F.A.R.: 3.0.

##### Sector 22-C2:

- Building height of two or three stories above ground or higher;
- Low or medium site coverage;
- Minimum F.A.R.: 0.1;
- Maximum F.A.R.: 3.0.



## Building Density

### Borough of Saint-Laurent

- Density
- High
  - ↑
  - ↓
  - Low
  - Not Applicable
  - Major Green Space or Riverside Park
  - 22-01 Area Number
  - Area to be Built or Transformed
  - Borough Limit

Master Plan

Mise en valeur  
du territoire  
et du patrimoine  
**Montréal**