

Front Elevation For Enlarged Mount Royal Arena Which is to Seat 12,000

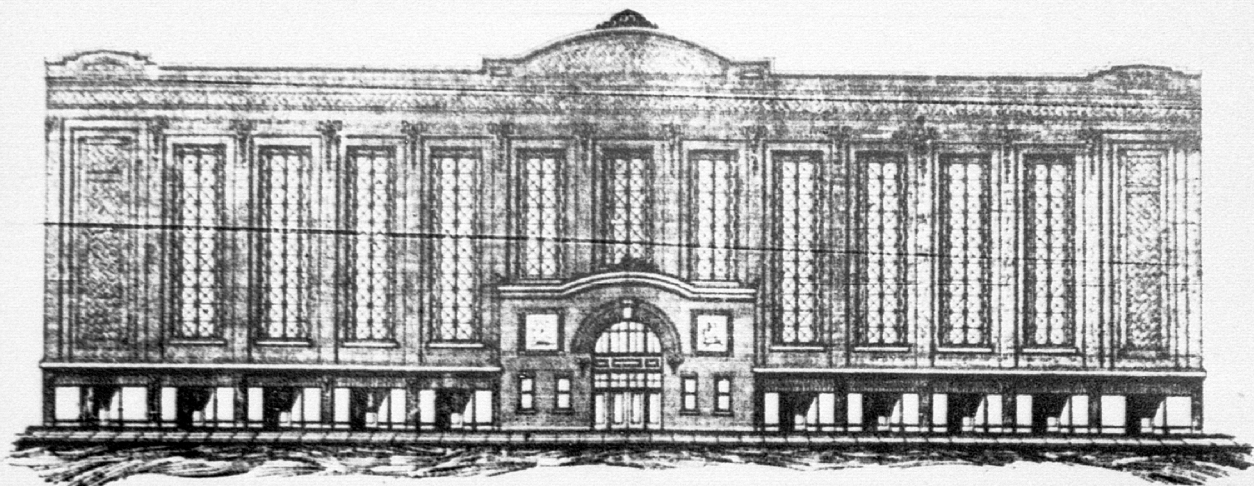
ALTERATIONS TO MOUNT ROYAL ARENA

— MOUNT ROYAL AVE. —

— MONTREAL —

— RAGU GARREY —

— ARCHT. — MONTREAL, APRIL 20 1924 —



Indications point that there will be bitter war for professional hockey patronage, between the Mount Royal Arena, of which Tom Duggan is managing director, with Oscar Benoit as local manager, and the Forum, with W. E. Northey as managing director, and Clarr Fraser as local manager.

For bids have been asked for from contractors in connection with chang-

ing the Mount Royal Arena into a building which, instead of seating only about six thousand, will be capable of seating twelve thousand people.

The bids are for extensive concrete work, and the doing away of the old girders, and must be accompanied by a guarantee to the effect that the building will be in proper shape and ready for usage at the beginning of the 1925-26 hockey season.

Ever since the idea of enlarging the old rink was first mentioned by Manager Benoit, it has been a subject of joking for his friends. And to any query about his whereabouts the reply would be: "Oh, Oscar Benoit! He is in retirement making improvements to his plans to enlarge the Arena." These jokers will now have to pull in their horns.

The plan of the front elevation of the enlarged and augmented rink is given here. It will be about fifty feet higher than it is at present and will provide double-deck galleries inside.

The Canadiens, who are the main attraction at the Arena, found last year that in many of their matches they could have drawn twice as many people as they did, had there been accommodation.