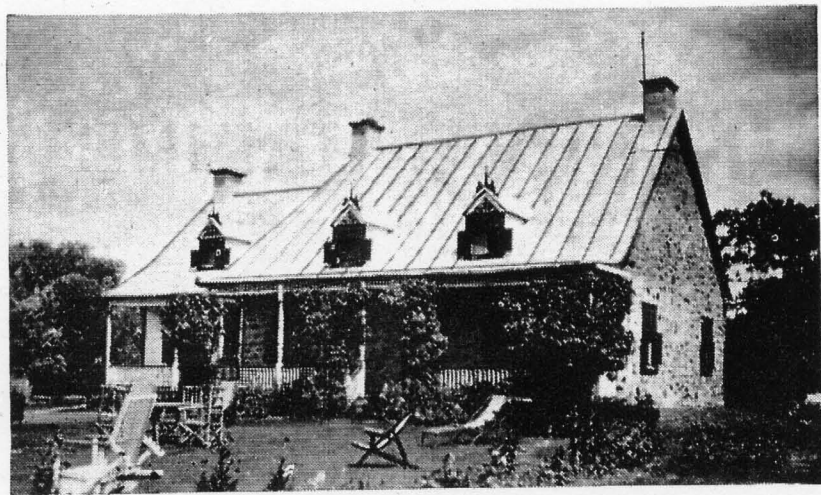


Over two hundred years old French Canadian Stone House



HENRY'S CABINS

10 Miles from the Centre East of Montreal - Highway No. 2

HENRY'S CABINS

on the St. Lawrence River



MODERN CABINS and ROOMS

SHOWERS

EXCELLENT MEALS



TELEPHONE: MI. 5-4412

