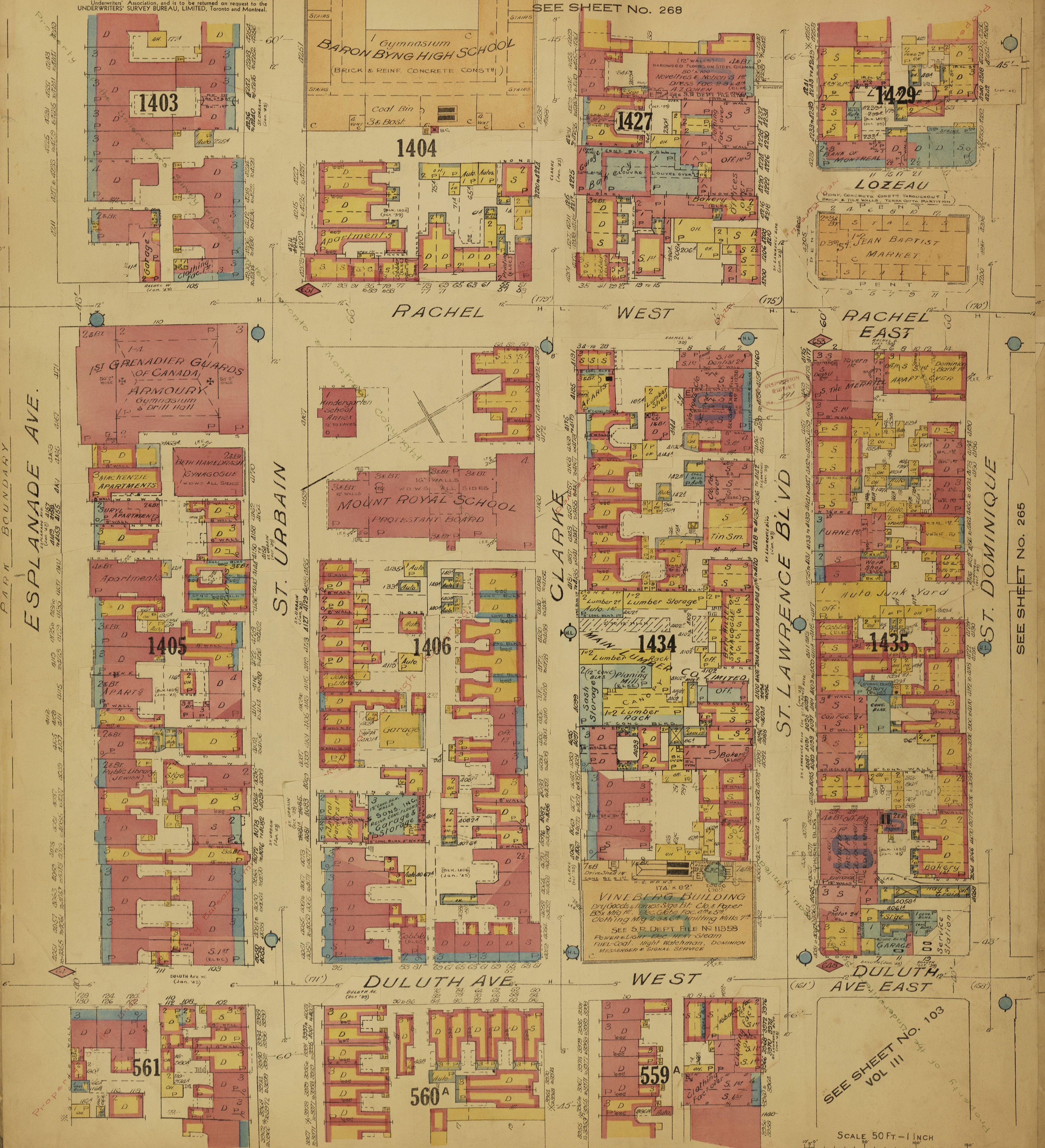


This plan is the property of the UNDERWRITERS' SURVEY BUREAU, LIMITED, (unauthorized reproduction prohibited) and is loaned on the following conditions: that the plan is to be kept in good order, that it is to be used only in connection with business of Companies, Members of the Canadian Underwriters' Association, and is to be returned on request to the UNDERWRITERS' SURVEY BUREAU, LIMITED, Toronto and Montreal.

SEE SHEET No. 268



ESPLANADE AVE.

ST. URBAIN

CLARKE

ST. LAWRENCE BLVD

ST. DOMINIQUE

SEE SHEET No. 92 VOL II

SEE SHEET No. 93 VOL II

SEE SHEET No. 103
VOL III

SCALE 50 FT. = 1 INCH

SEE SHEET No. 265