

Success @ montréal program

RENEWING AVENUE VICTORIA

**TAKE ADVANTAGE
OF A SUBSIDY
TO RENOVATE
YOUR BUSINESS!**



AN ATTRACTIVE, VIBRANT AVENUE VICTORIA

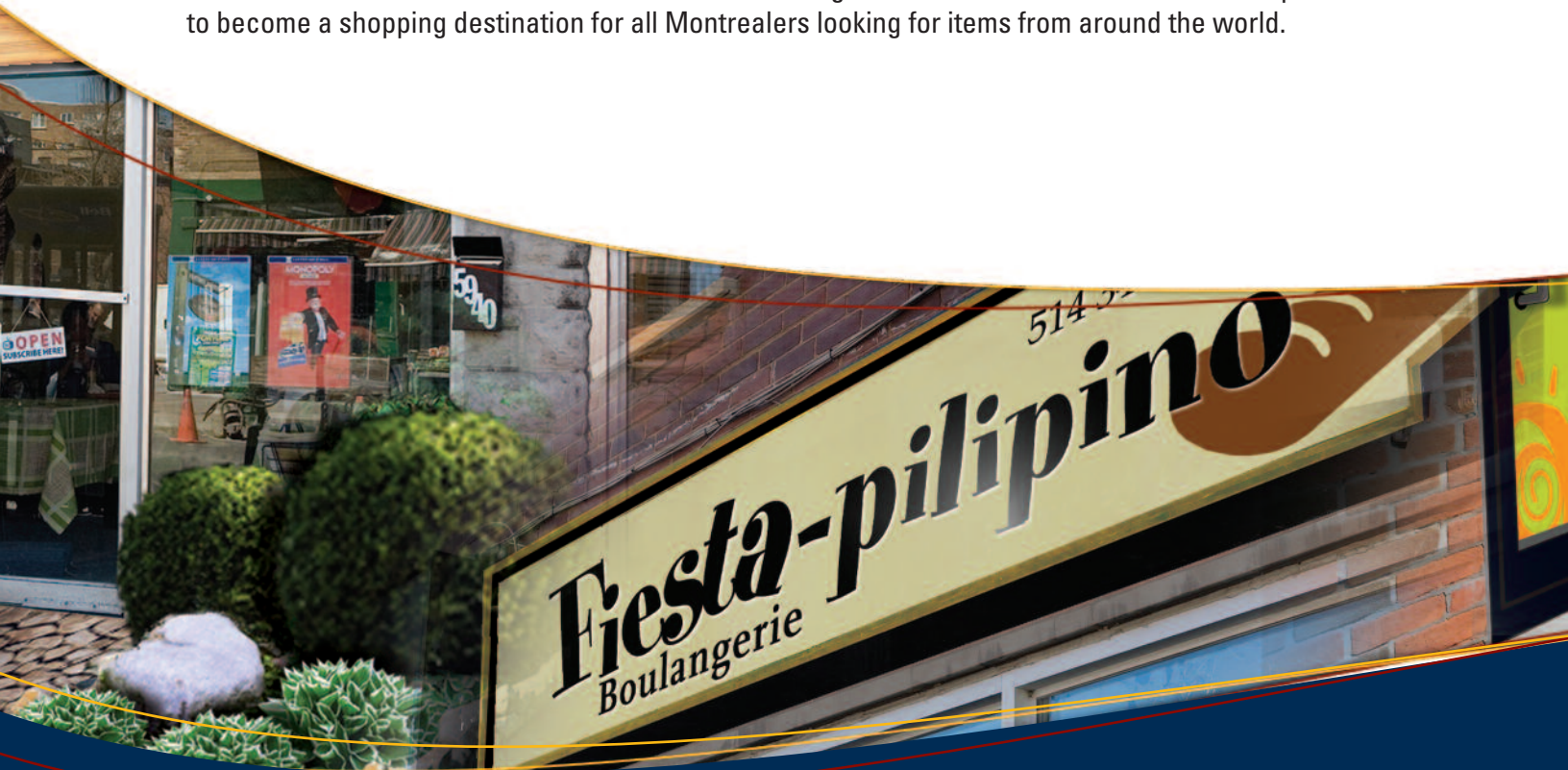
As a merchant on avenue Victoria, you can take advantage of the renovation subsidies for business façades available under the success@montreal program – commercial component (PR@M – Commerce) to upgrade one or more elements of your business façade!

PR@M – Commerce is a revitalization program for commercial districts and streets, aimed at improving the quality of neighbourhood life and promoting economic growth. The renovation subsidy program is intended more specifically for merchants and owners of buildings along avenue Victoria, between boulevard Édouard-Montpetit and rue Mackenzie. Businesses on avenue Van Horne (north side), between avenue Victoria and rue Lavoie, are also eligible.

PR@M – Commerce subsidies covering up to one-third of the cost of the work are available, to a maximum of \$33,000.

The program also offers financial support of up to \$4,000 per renovation project to cover a portion of the professional commercial design fees.

The Côte-des-Neiges—Notre-Dame-de-Grâce borough's objective is to highlight the street's multicultural wealth and the vibrant nature of its existing businesses. Avenue Victoria has the potential to become a shopping destination for all Montrealers looking for items from around the world.



MERCHANTS PLAY AN IMPORTANT ROLE IN RENEWING AVENUE VICTORIA

The Côte-des-Neiges—Notre-Dame-de-Grâce borough and the city of Montréal will be making a number of concrete improvements to avenue Victoria in 2009: upgrading a water main, road and sidewalk repairs and planting some forty trees. The borough also plans to replace some of the street furniture in 2010.

Merchants are now invited to join in showcasing the street's vibrant character. The Côte-des-Neiges—Notre-Dame-de-Grâce borough encourages you to take advantage of the PR@M – Commerce subsidy program to replace and enhance one or more elements of your business façade, i.e. **doors, windows, signs, awnings, patios and landscaping** (where authorized by borough by-laws).

An architecture student has been hired by the CDN—NDG community economic development corporation and will be offering free advice to help you with your renovation plans.

*Take advantage of the subsidies available to you to freshen up your business façade!
Together we can make Victoria one of Montréal's leading commercial arteries!*

For further information, feel free to contact the Côte-des-Neiges—Notre-Dame-de-Grâce borough Economic Development Commissioner, François Da Sylva, at **514 872-3897**.



IMAGINE THE IMPACT OF A NEW DOOR OR WINDOW...

BEFORE



AFTER



IMAGINE THE IMPACT OF A NEW SIGN...

BEFORE



AFTER



IMAGINE THE IMPACT OF A LOVELY **AWNING...**

BEFORE



AFTER



IMAGINE THE IMPACT OF AN ATTRACTIVE PATIO...

BEFORE



AFTER



IMAGINE THE IMPACT OF PROFESSIONAL LANDSCAPING...

BEFORE



AFTER

