

NPS REVITALIZATION OVERVIEW

2013.11.08

NATHAN PHILLIPS SQUARE

presented by

Chris Pommer | PLANT Architect Inc.



368 m

Image © 2007 DigitalGlobe

© 2007 Google

Center 43°39'10.47" N 79°23'01.78" W elev 88 m

Streaming ||||| 100%

Eye alt 1.36 k



PRE-WAR TORONTO – LOOKING NORTH FROM OLD CITY HALL

COMPETITION 1



1955 PROPOSAL FOR CITY HALL, TORONTO
MARANI & MORRIS, MATHERS & HALDENBY, SHORE & MOFFAT

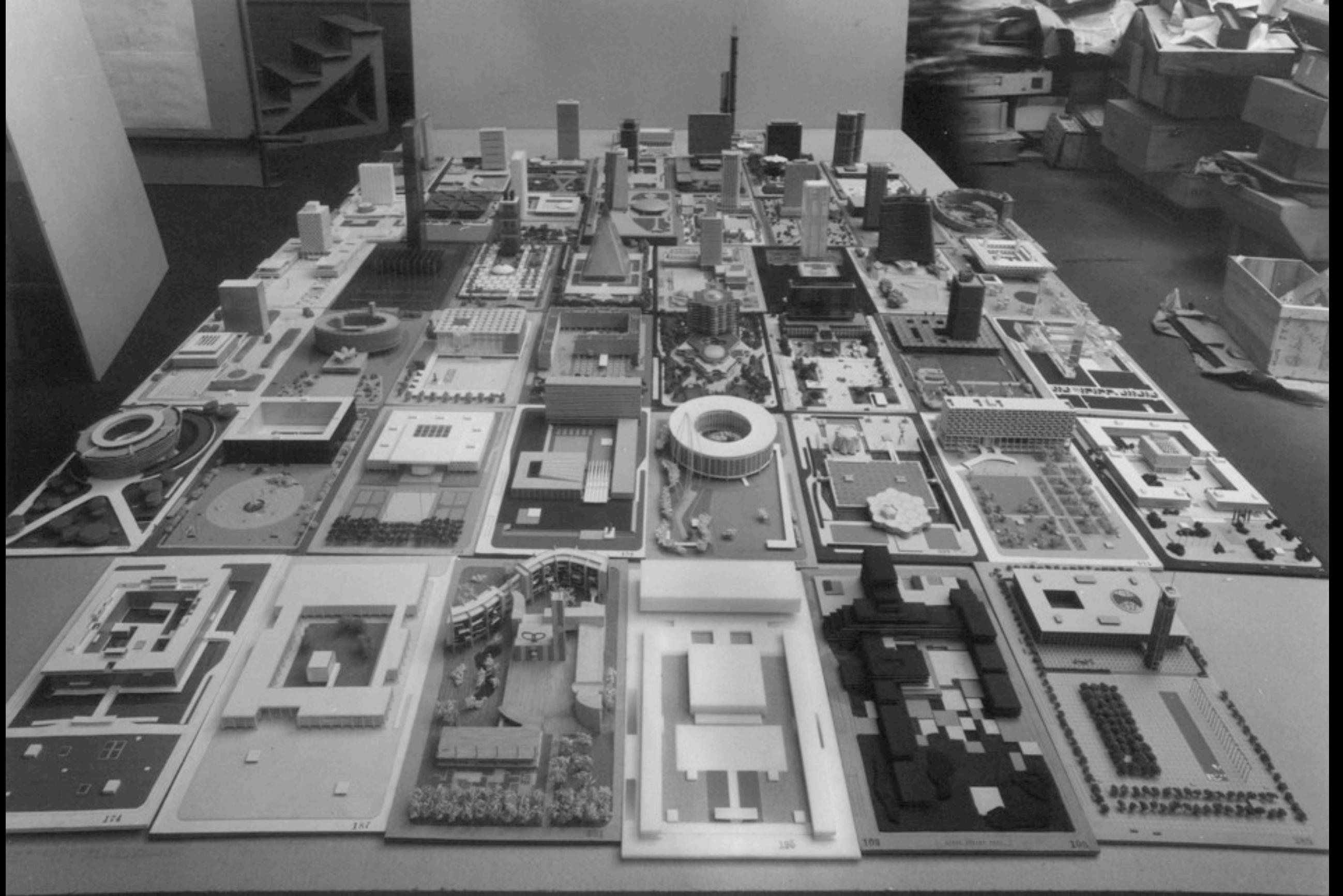
CONDITIONS OF COMPETITION

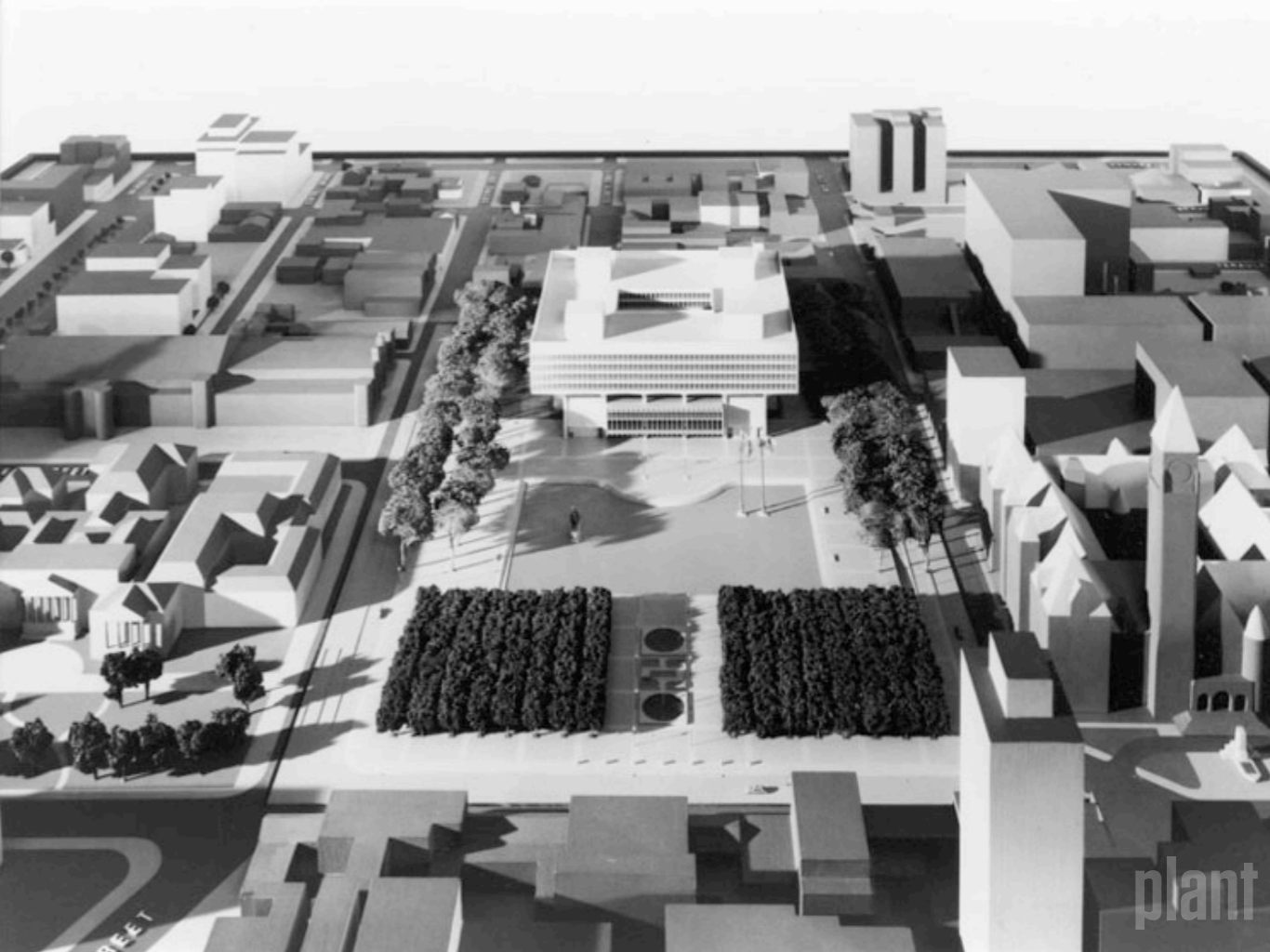
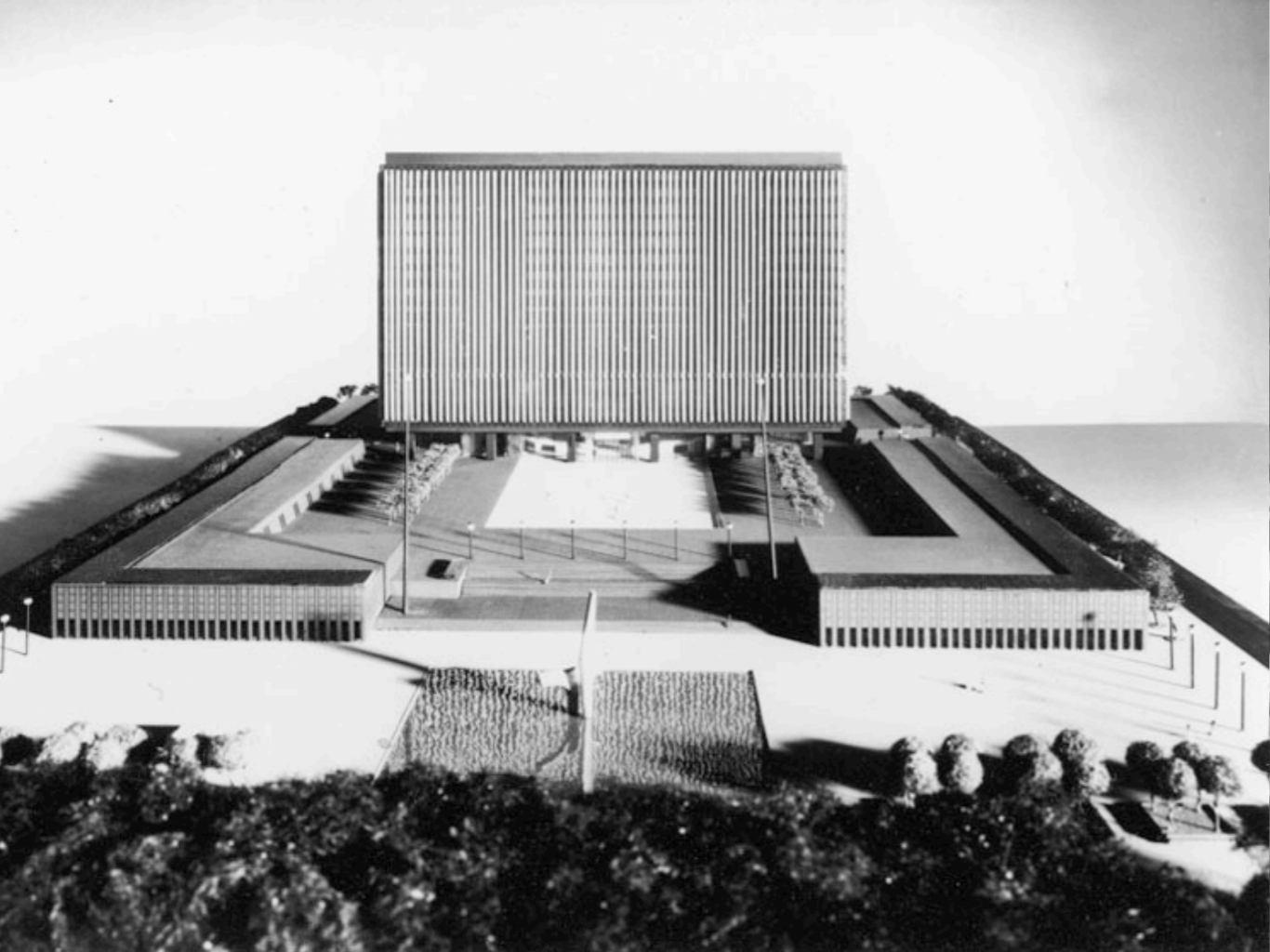
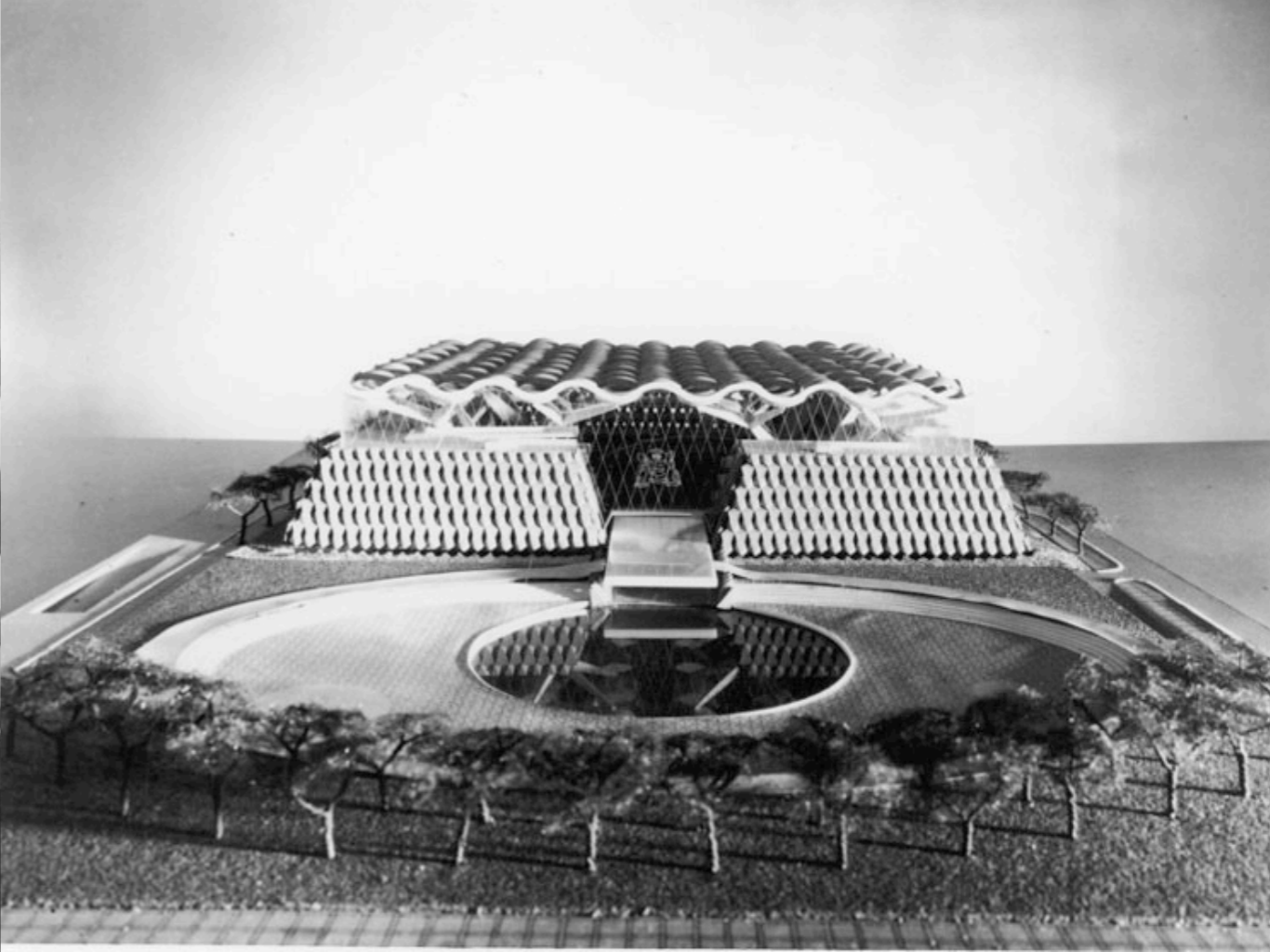
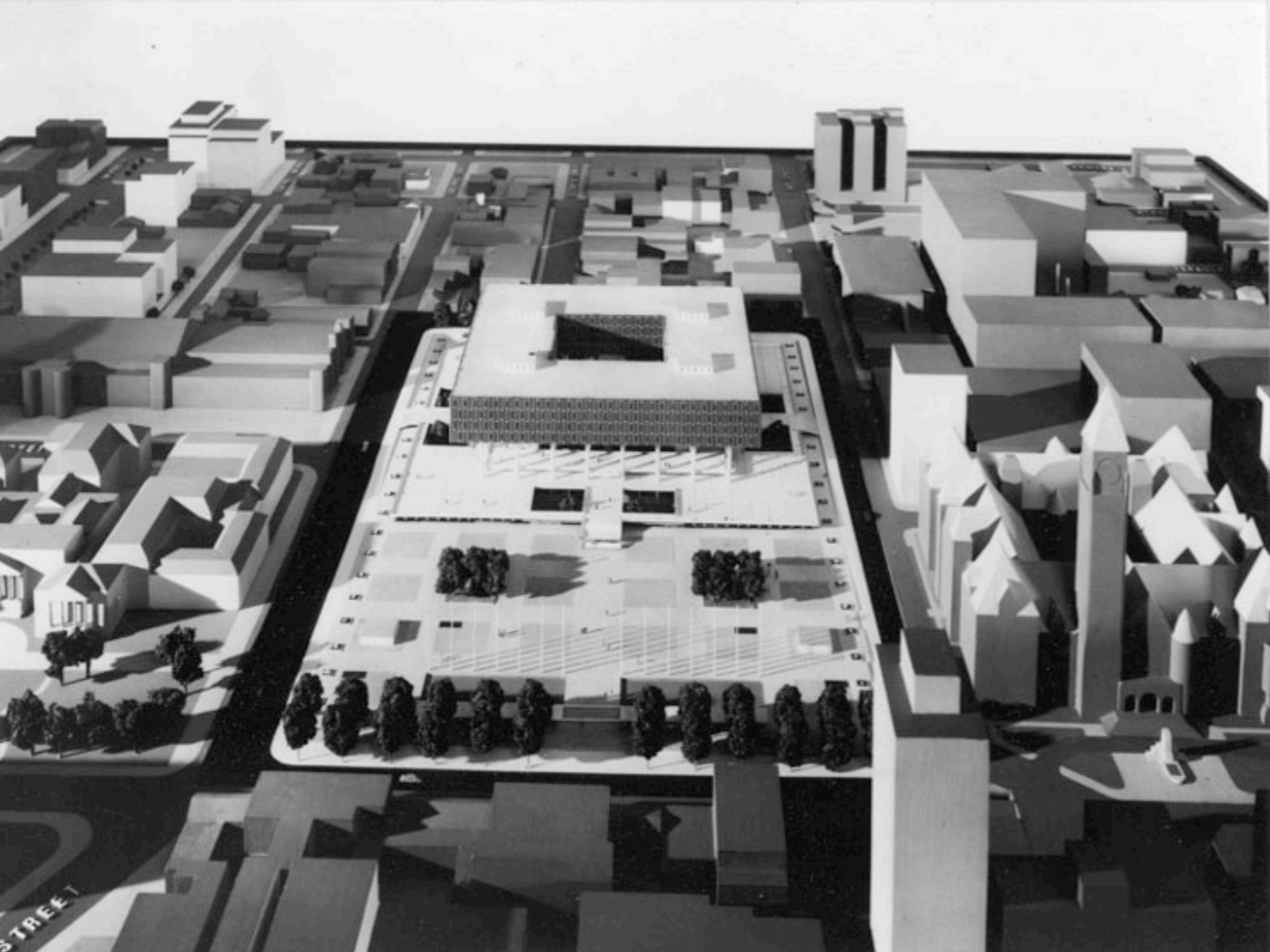


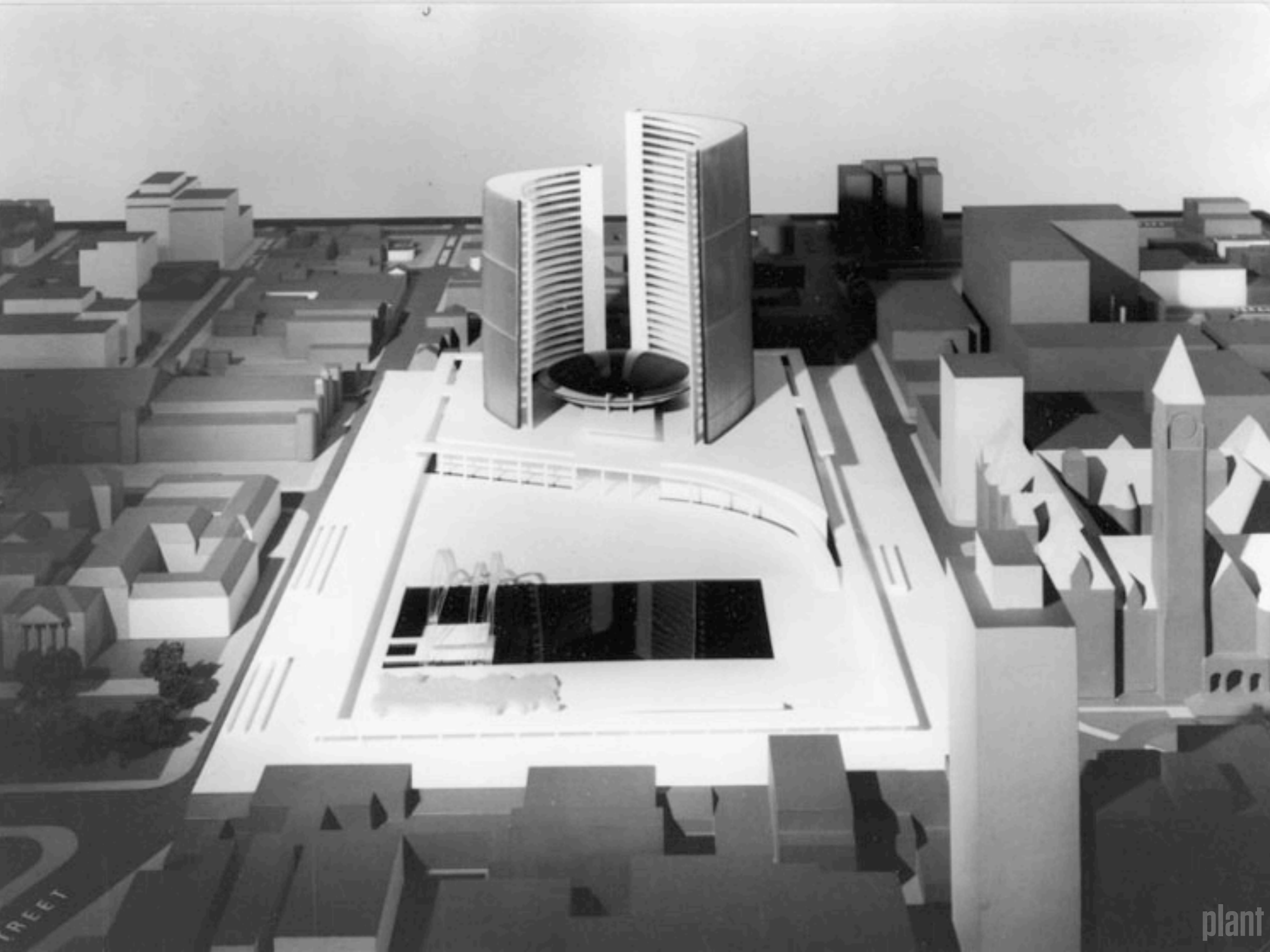
CITY HALL AND SQUARE

TORONTO, CANADA







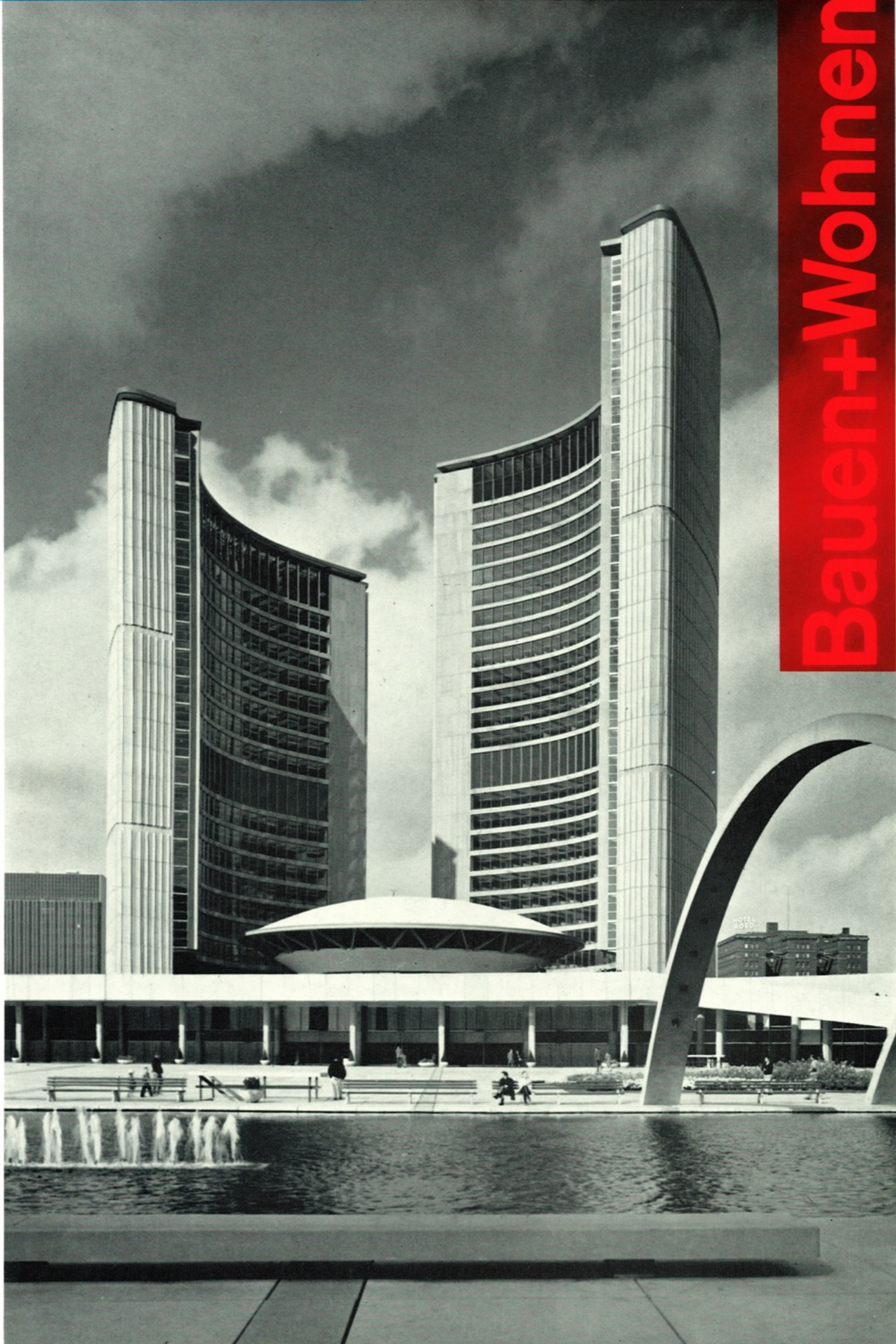


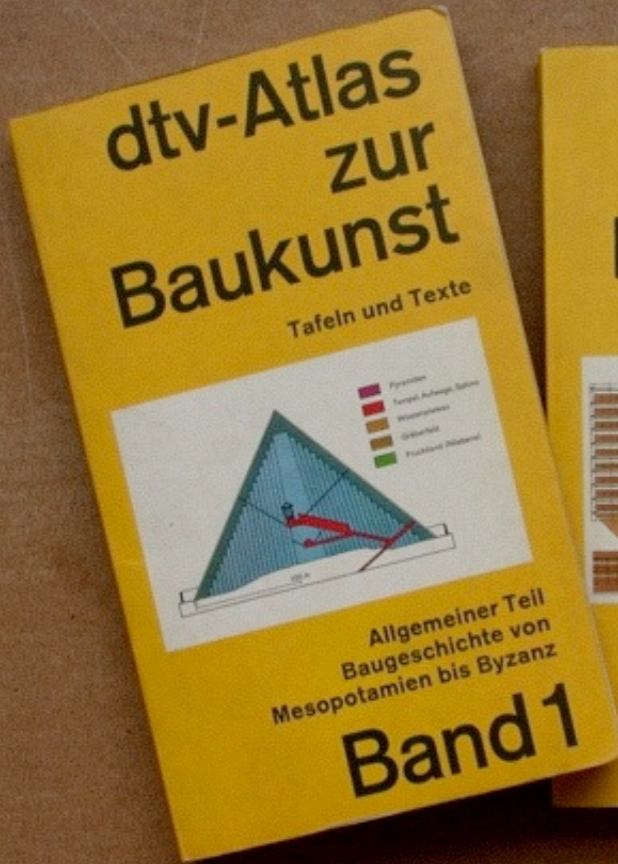


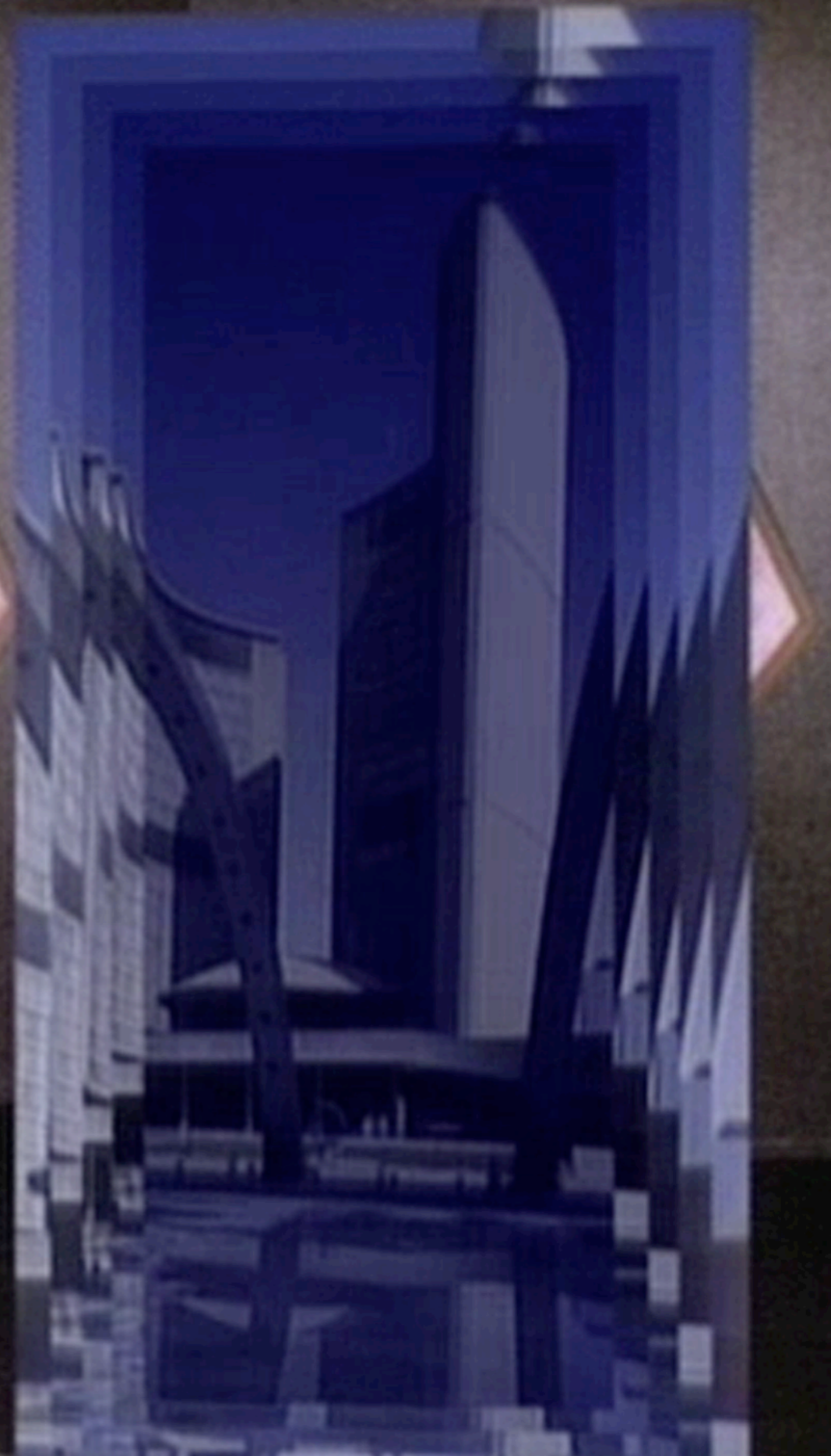












MIDDLE AGE











CLOSED

Litter



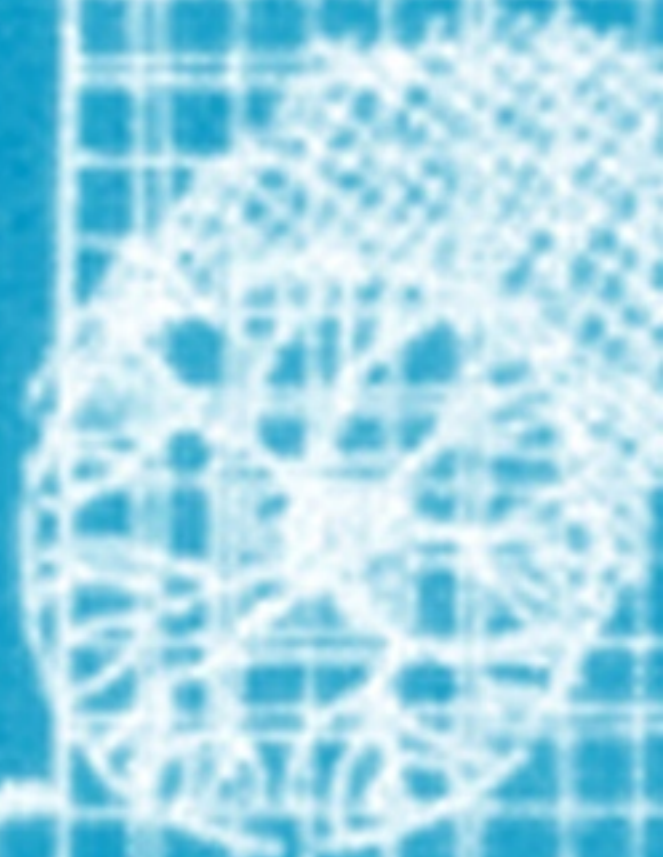


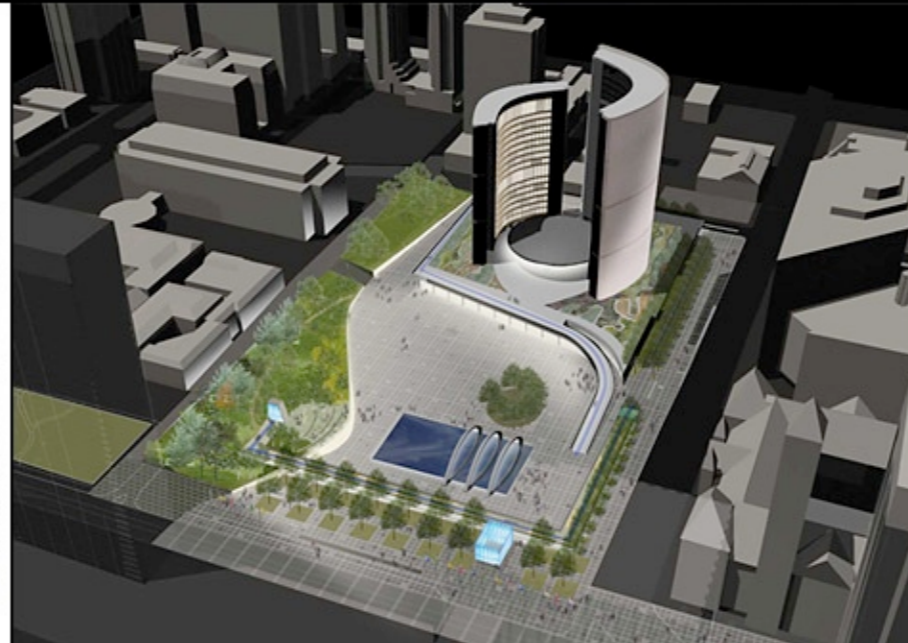
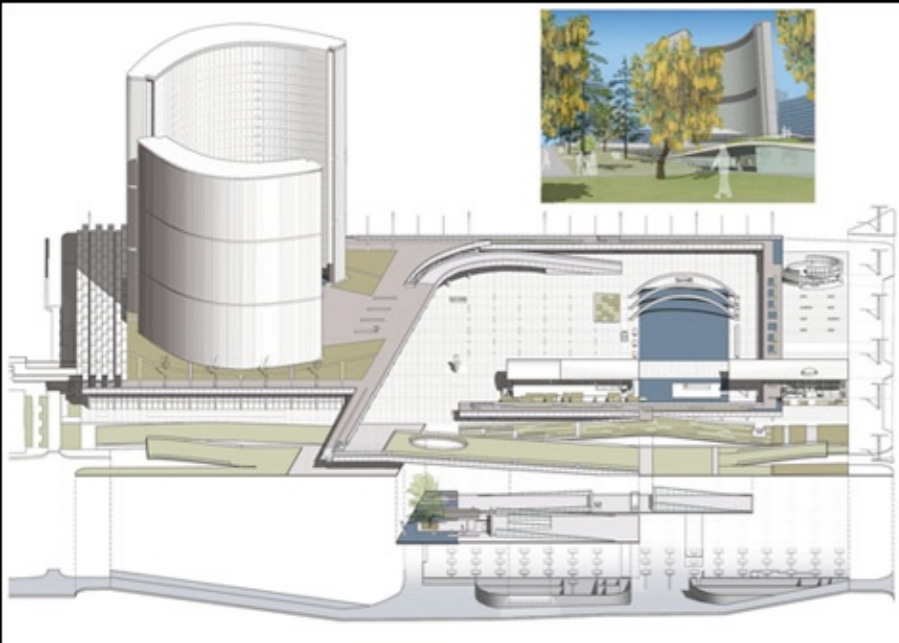
COMPETITION 2

NATHAN PHILLIPS SQUARE

REVITALIZATION

Design Competition Brief





BAIRD SAMPSON NEUERT
VLAN PAYSAGES

ROGERS MARVEL
KEN SMITH
DTAH

ZEIDLER PARTNERSHIP
GROUP SIGNES

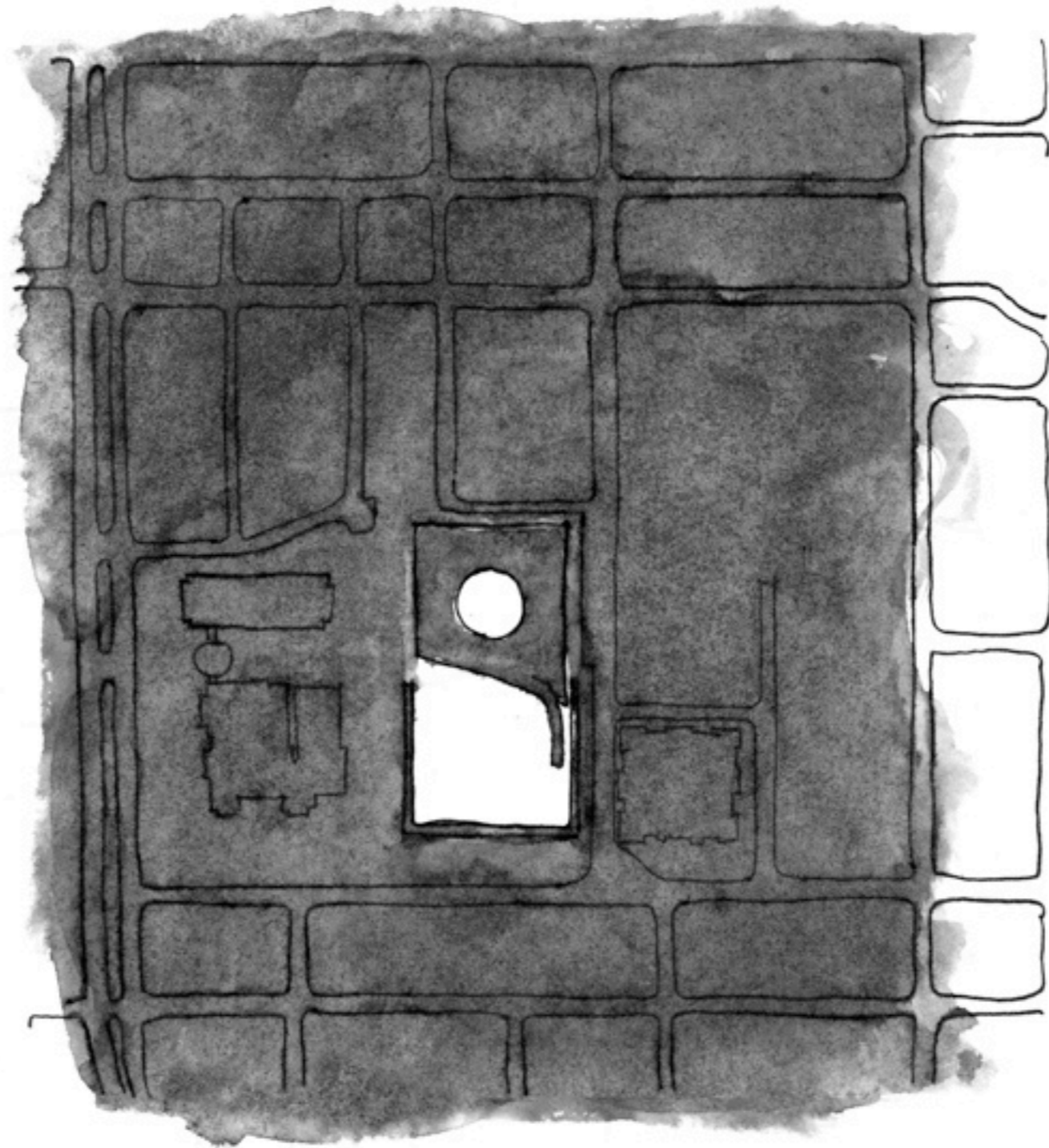


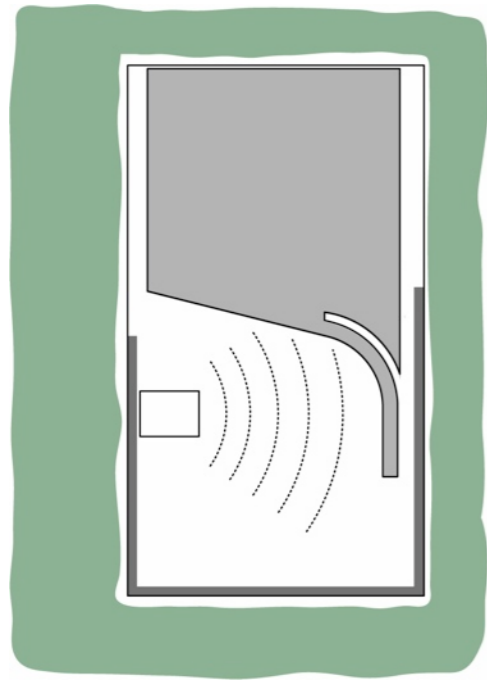
PLANT Architect Inc.: Chris Pommer, Lisa Rapoport, Mary Tremain, Heather Asquith, Jane Hutton, Renée Kuehnle, Lisa Moffitt, Elise Shelley | **Shore Tilbe Irwin & Partners:** Andrew Frontini, D'Arcy Arthurs, Aaron Cheng, Aimee Drmic, Emily MacLennan, Talal Rameh | **Peter Lindsay Schaudt Landscape Architecture, Inc.:** Peter Schaudt, Jessica Ortega, Lybra Lindke, Geoffrey Valentino | **Adrian Blackwell:** Geoffrey Turnbull, Alan Kwan, Marcin Kedzior | **Blanche Lemko van Ginkel;** | **Enermodal Engineering Limited:** Stephen Carpenter, Braden Kurczak | **Theatre Projects Consultants:** Brian Hall | **Blackwell Bowick Partnership Limited:** Christian Bellini, David Bowick | **Crossey Engineering Ltd.:** Wallace Eley, Ion Luh, Andrew Pratt | **Vermeulens Inc.:** James Vermeulen, Anthony Lizzi | **Urban Trees + Soil Jim Urban** | **CMS Collaborative Inc.** | **BusyBee Services** | **ICON Landscape Architecture** | Michael Bartosik



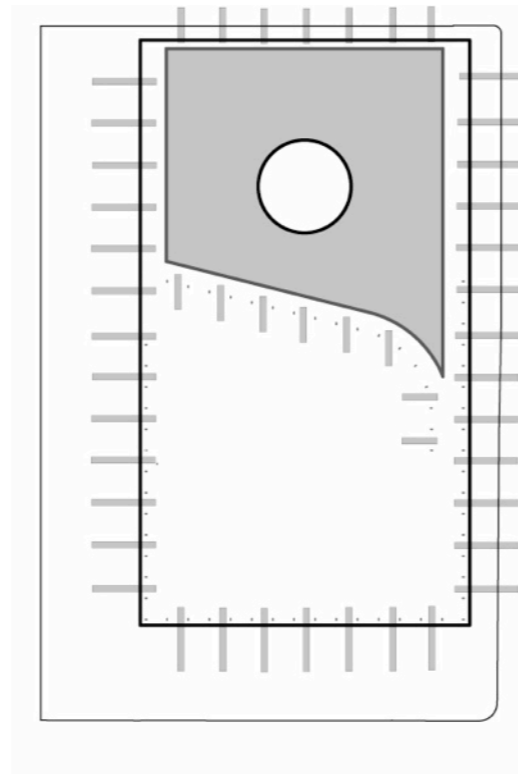
AGGORA

THEATRE

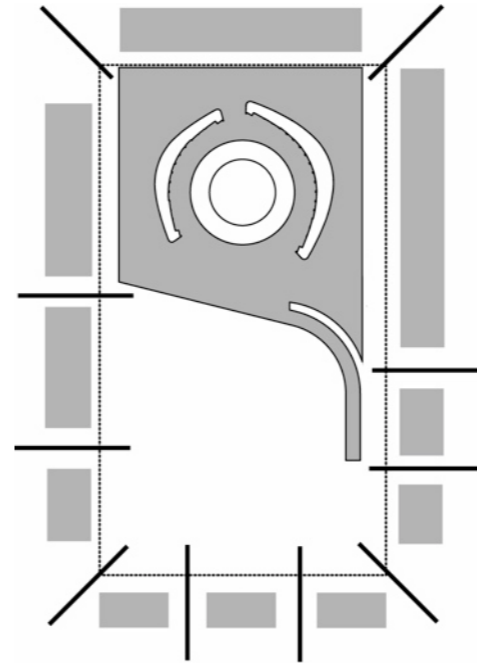




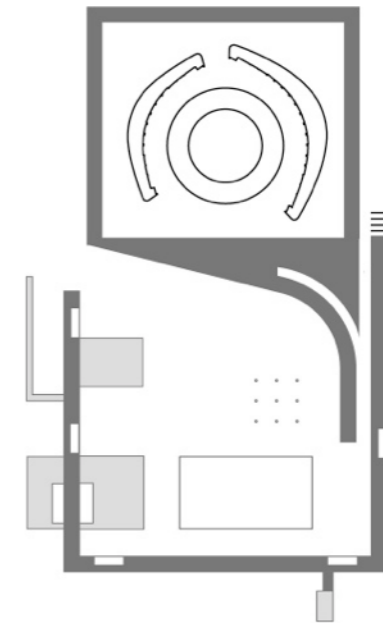
OPEN THE SQUARE



**PROGRAM A
POROUS PERIMETER**



**ACTIVATE
THE STOA**



**BRIDGE THE
THRESHOLD**



Bay Street

Hagerman Street

Queen Street

Info Kiosk

Skate

Theatre

Resto

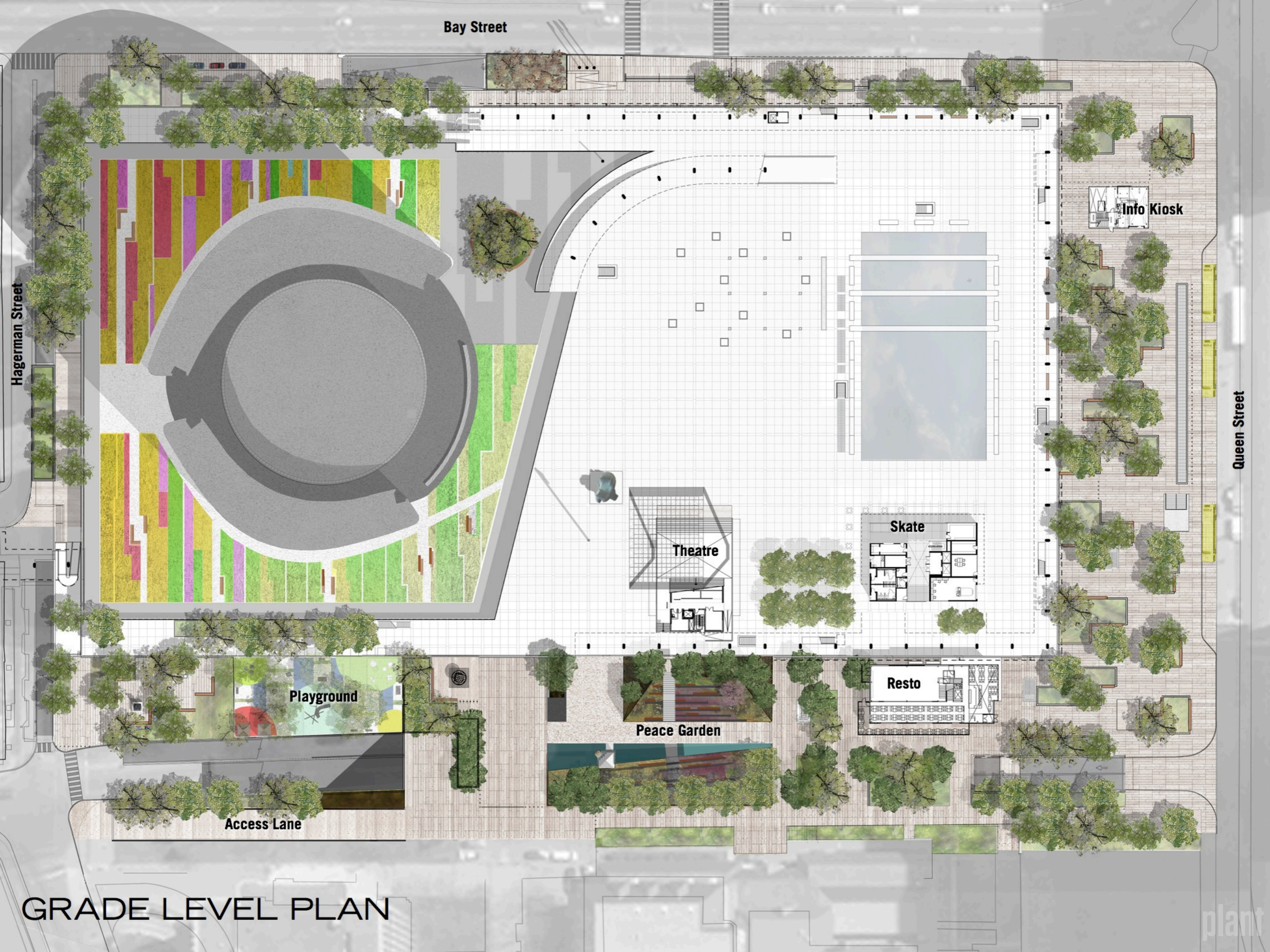
Peace Garden

Playground

Access Lane

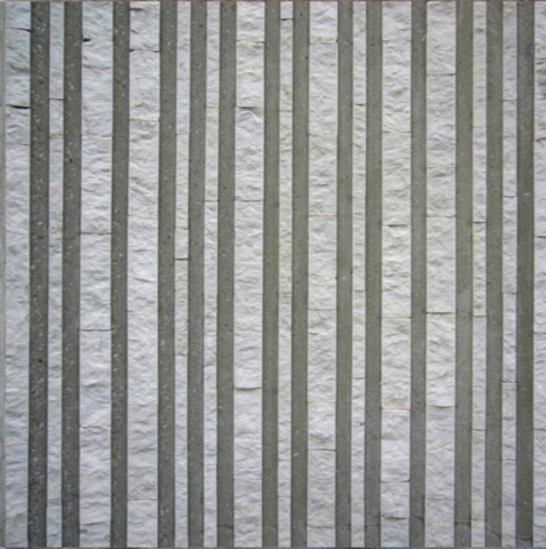
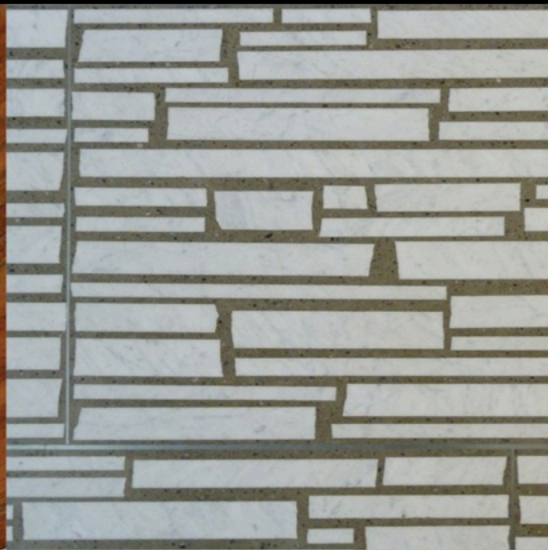
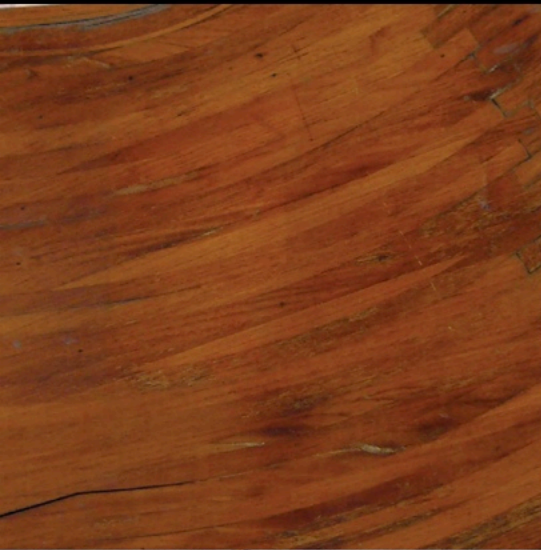
GRADE LEVEL PLAN

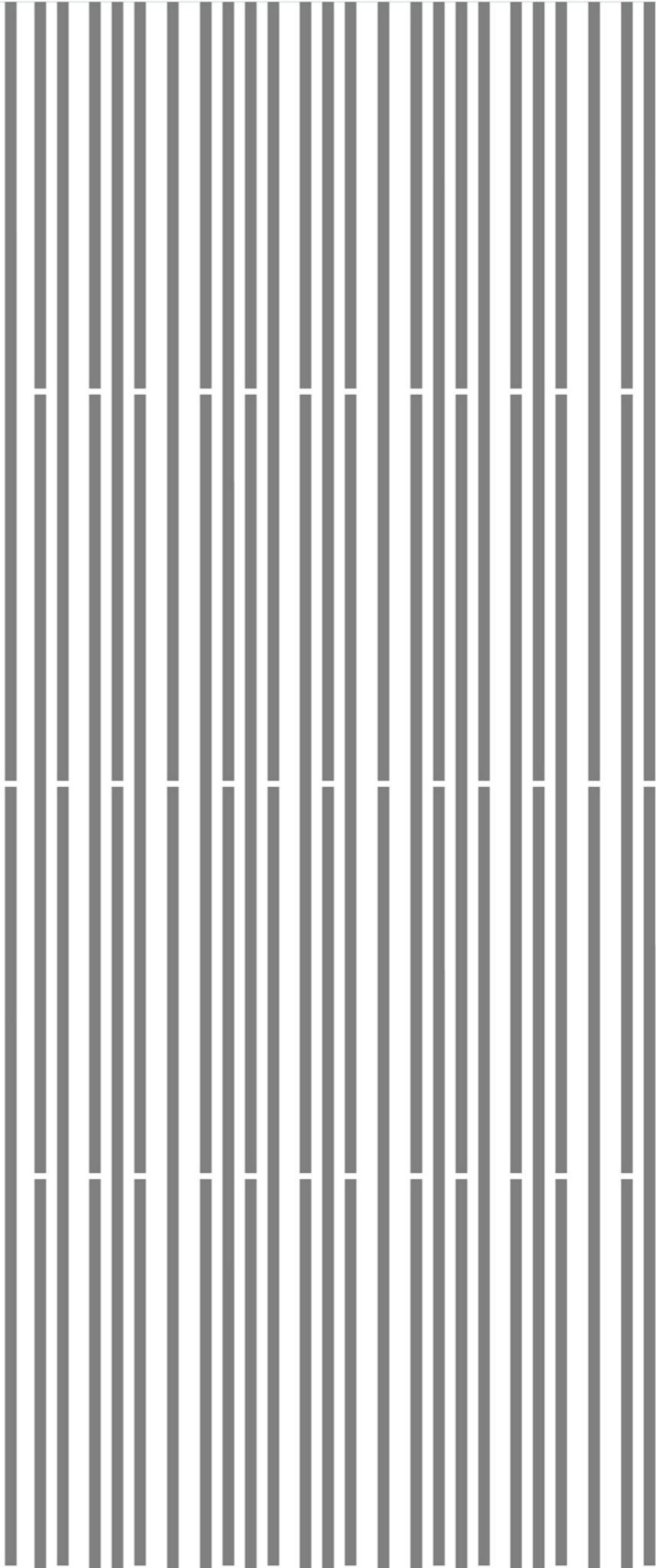
plant



HERITAGE

MATERIALITY



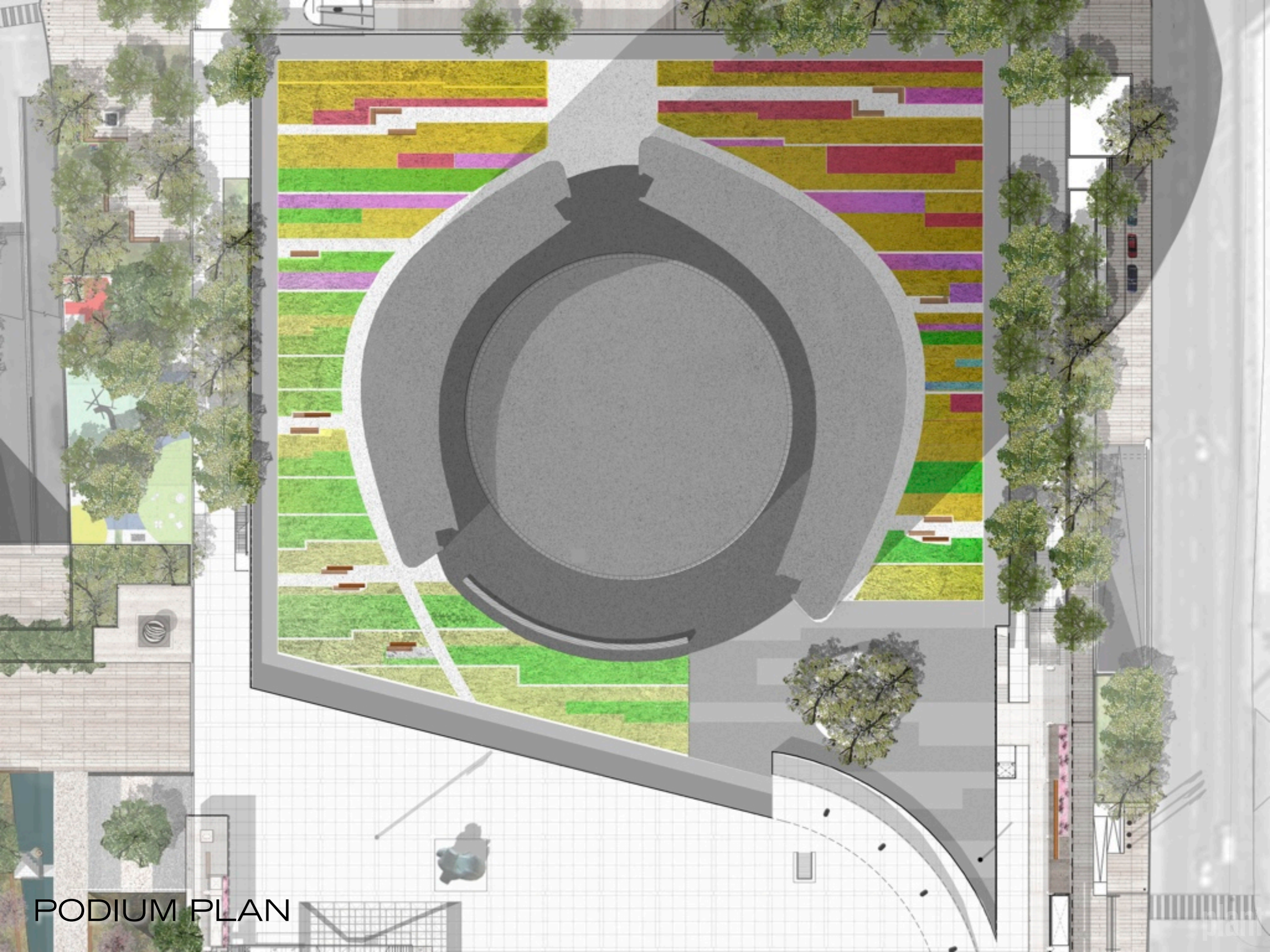








THE PROJECT



PODIUM PLAN



1 FULL SUN -
Sedum acre 'Aureum'

Sedum hybridum 'Immergrunchen'

Sedum sichotense

Sedum 'Weihenstephaner Gold'

2 FULL SUN -
Allium schoenoprasum 'Forescate'

Sedum album 'Murale'

Sedum middendorffianum
var. diffusum

Sedum stefco

3 PARTIAL SUN -
Allium Schoenorasum 'Forescate'

Sedum spectabile 'Neon'

Sedum spurium 'John Creech'

Sedum spurium 'Royal Pink'

4 PARTIAL SHADE -
Sedum spurium 'Bronze Carpet'

Sedum spurium 'Dragon's Blood'

Sedum spurium 'Fuldaglut'

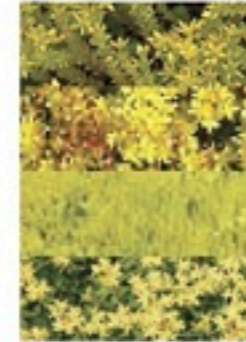
WINTER



SPRING



SUMMER



FALL







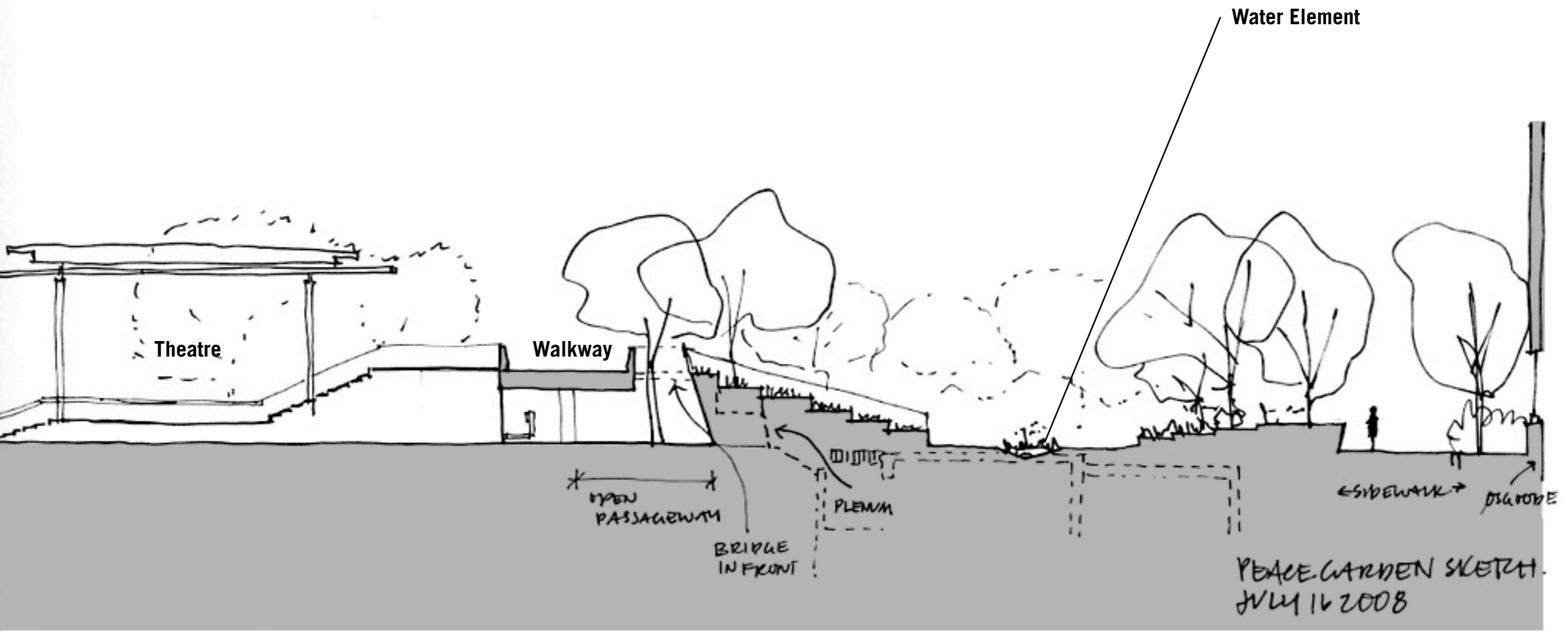






THEATRE





Water Element

Theatre

Walkway

* OPEN
PASSAGEWAY *

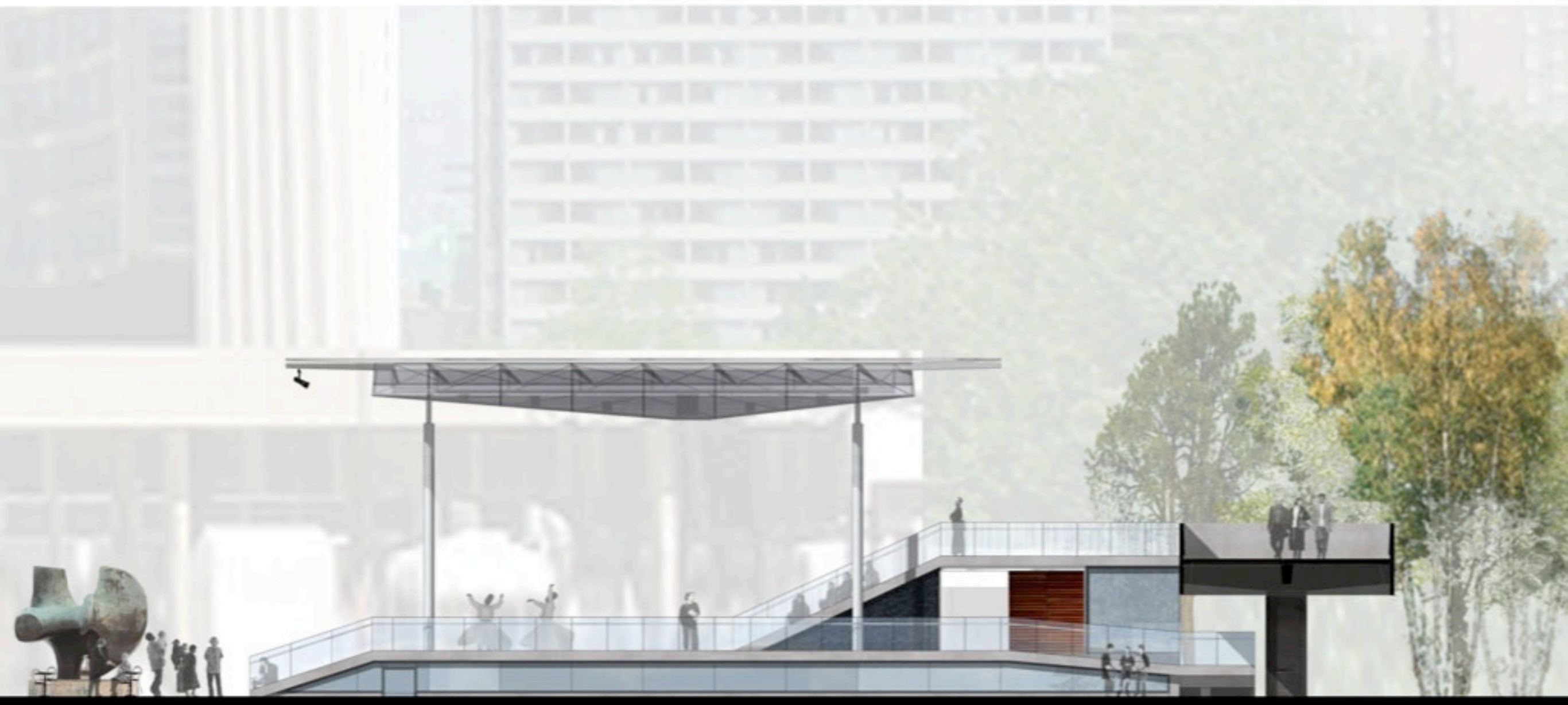
BRIDGE
IN FRONT

PLENUM

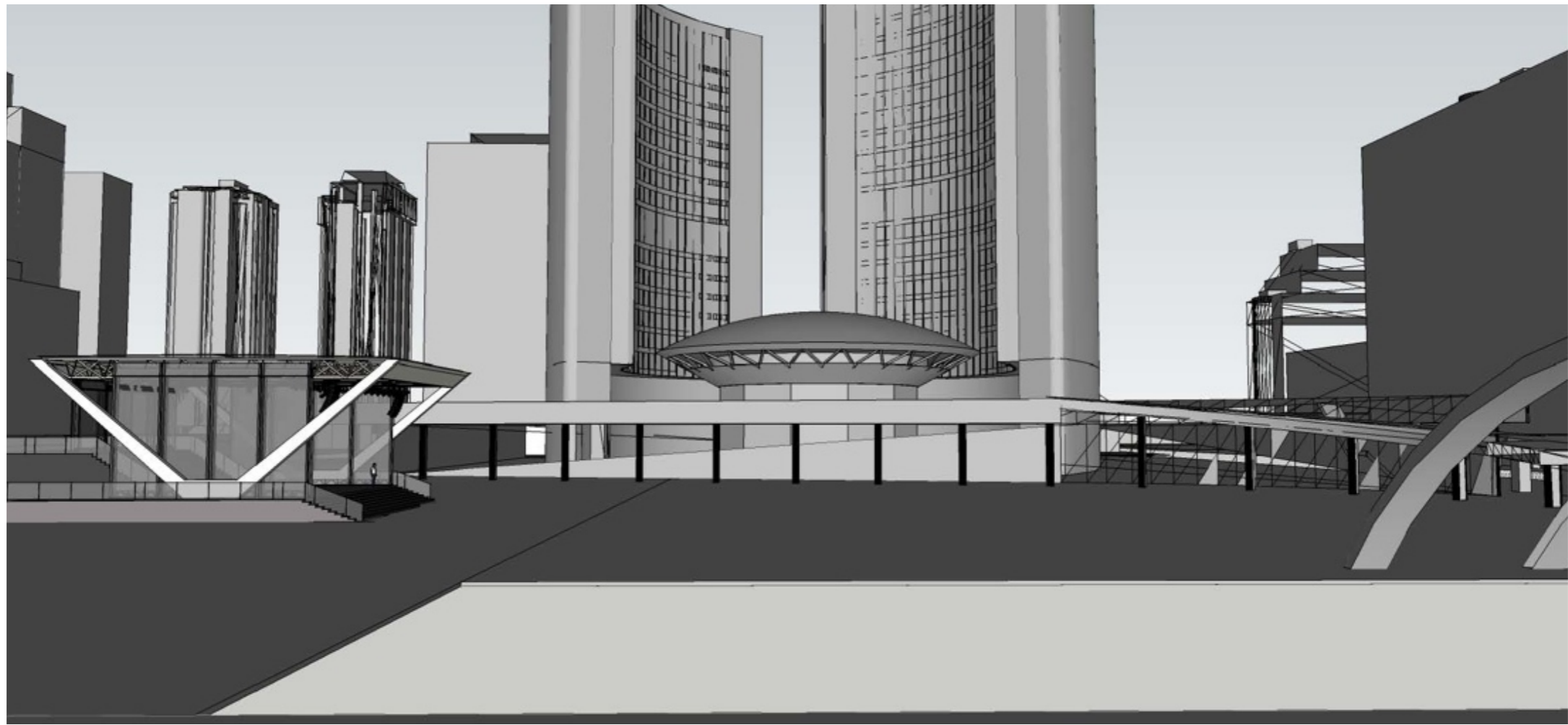
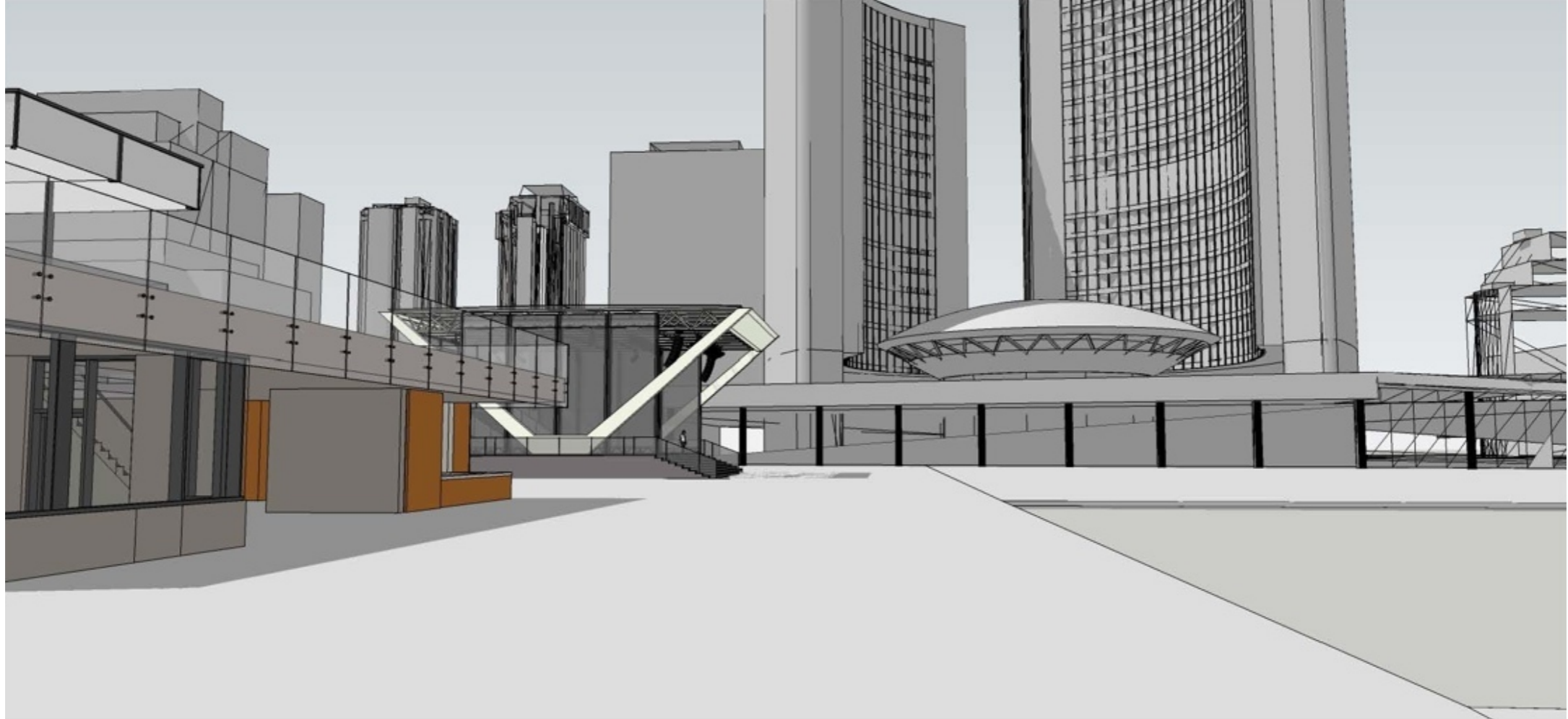
← SIDEWALK →

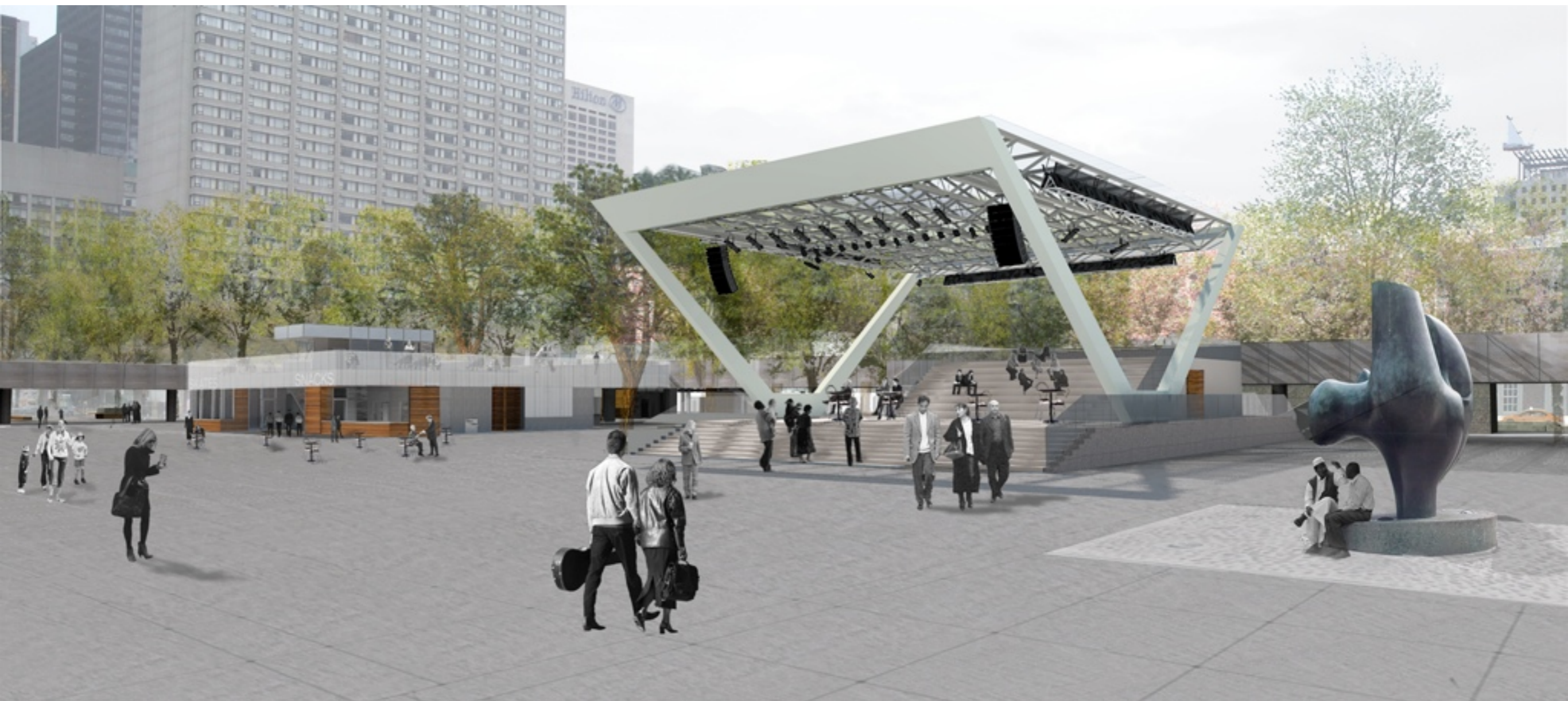
DRAINAGE

PEACE GARDEN SKETCH.
JULY 16 2008









THEATRE – VIEW FROM NORTHEAST (SUMMER)











SKATE PAVILION



info T.O.

Welcome
Visitor
Information

Welcome
Visitor
Information





SKATES

SNACKS

♿





SKATES

SNACKS











PEACE GARDEN

Comments from an Outsider

Since its public announcement, last December, the proposed Peace Garden for Nathan Phillips Square in Toronto, has raised a lot of controversy among the profession. The Toronto Society of Architects has even gone so far as to request a special meeting for discussing the issue with its authors.

In light of this recent uproar, there are a few comments that I would like to make from the point of view of an outsider. Notwithstanding the question of whether or not a permanent structure should be added to Nathan Phillips Square, two major points need to be addressed: the strength of the blame and the question of symbolism.

The first thing that struck me, especially coming from architects, urban planners and landscape architects, is the vigor of the protest over such a small-scale project as the Peace Memorial whereas the Railway Lands Development Concept, which will have a much greater impact over the urban fabric of Toronto, has brought practically no public response from the same professional groups.

A most significant fact that links these two seemingly unrelated projects is that the City of Toronto's Urban Design Group, led by Ken Greenberg, is deeply involved in the formulation of the Railway Lands Development Concept as well as being responsible for the design of the proposed Peace Memorial.

One cannot help but wonder why our colleagues are showing such eagerness in the case of Nathan Phillips Square whereas so few of them have made themselves clear on the Railway Lands issue.

An hypothesis that comes to mind is that either the issues involved in the Railway Lands Development Concept are too difficult for the average member of our environmental professions to comprehend, or that professionals are simply afraid to voice their opinion for fear of upsetting their chances of getting an eventual commission.

The other major point that I would like to raise concerns "obscure symbolism" of the proposed Memorial. This critique which is probably the strongest point of contention with the project (as witnessed by numerous newspaper articles) raises, as far as I am concerned, the whole issue of meaning in architecture.

One of our major handicaps is the fact that we have not been graced with too many examples of symbolic architecture over the years in our wonderfully practical Canadian cities. Maybe this is part of the reason why it still "takes paragraphs" to explain the symbolism of the proposed Memorial. We are just not in the habit of reading symbols.

Some of our more symbol-oriented architects like Melvin Charney, have in the past paid the prize for making their symbols too obvious (see Corridor!). God only knows how Toronto professionals might have reacted, had Mr. Charney been asked to design the Peace Memorial.

At this point in time, it seems that any design for a Peace Memorial would be criticized, whoever does it, whether it is done through a competition process or not, and whether it is discussed at public meetings or not.

However, what is serious and sad for the future of the design professions is that some of their representatives can dismiss so lightly the issue of symbolism. How did we forget that we hold the key to the enhancement of our built environment through symbolism? I suspect that some of our colleagues never even had an inkling of it.

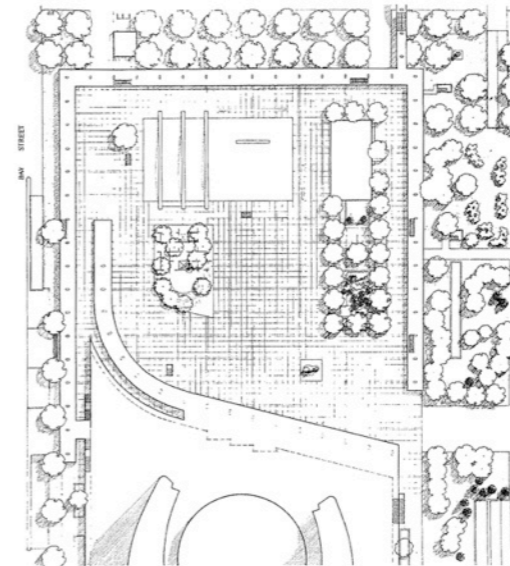
Had the Peace Garden proposal not been presented at approximately the same time as the Railway Lands Development Concept, I would have been delighted with this sudden surge of professional interest. However, the absence of public commitment on the part of architects, urban planners and landscape architects on the question of the Railway Lands' future, has made me suspect that some professionals have unleashed their unexpressed feelings of frustration with the Urban Design Group, using the smaller issue of the Peace Garden as a pretext.

Compared with the larger development contemplated for one of Toronto's most important pieces of land, the question of Nathan Phillips Square is a tempest in a teapot. Let us hope at least the Queen will enjoy it!

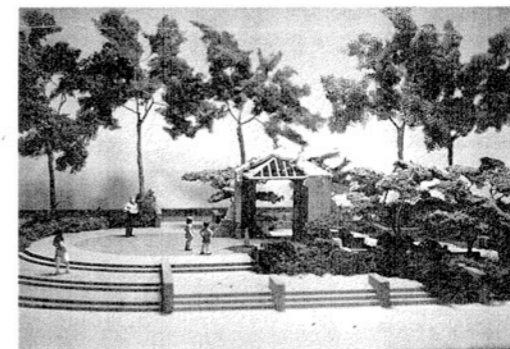
Odile Hénauld



PEACE GARDEN FOR NATHAN PHILLIPS SQUARE



Site plan of Nathan Phillips Square including the proposed Peace Garden



Photograph of the Model illustrating the proposed Peace Memorial

Site plan of the proposed Peace Garden

Description prepared by the Urban Design Group

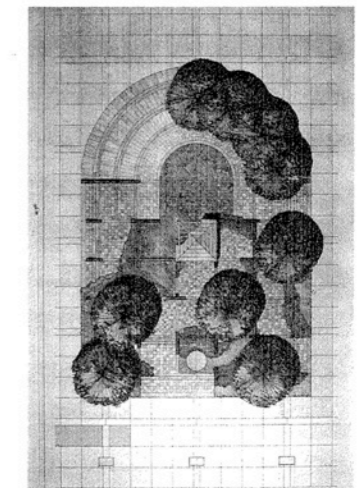
The Peace Garden would be constructed in 1984, our Sesquicentennial year, as a lasting tribute to peace. In symbolizing peace and a love for mankind, it will represent our continuing struggle to avoid the devastation of war.

The Peace Garden would embrace a three dimensional grouping of elements including a small sculptured structure, an eternal flame, a pool of water, and stone platforms and walls in a landscape setting.

The overall image would be one of human society in microcosm; the central structure, a simple cube with a pitched roof that universally symbolizes human shelter. This image is simplified in the grid of low walls suggesting community. The edges of the building and the implied foundation walls would appear "damaged" to suggest conflict and evoke images of a group of buildings once present but now missing.

The cube would be faced with stone, an ancient and universal building material suggesting long life. But on the north west corner of the shelter the skin of the building would be cut away as a reminder of how fragile civilization is and how destructive war is. The eternal flame would be adjacent to this corner of the shelter, appearing to support the shelter and, in this way symbolizing hope, regeneration and the will of mankind for peace.

The Peace Garden occupies some 600 sq. metres but it is a completely open and usable part of the square. The shelter itself would contain four



doorways which open north, south, east and west symbolizing global unity. Walkways join the Peace Garden to other elements on the square, each walkway aligning with an important vista, particularly one to the northwest leading to Henry Moore's Archer.

In the shelter an eternal flame and pool would stand calmly surrounded by lush vegetation, the rich landscaping symbolizing the life-force of the earth and evoking images of the interdependence of man and nature, growth, regeneration and tranquility. By design, the Peace Garden will achieve impact by the power of its image not by its size.

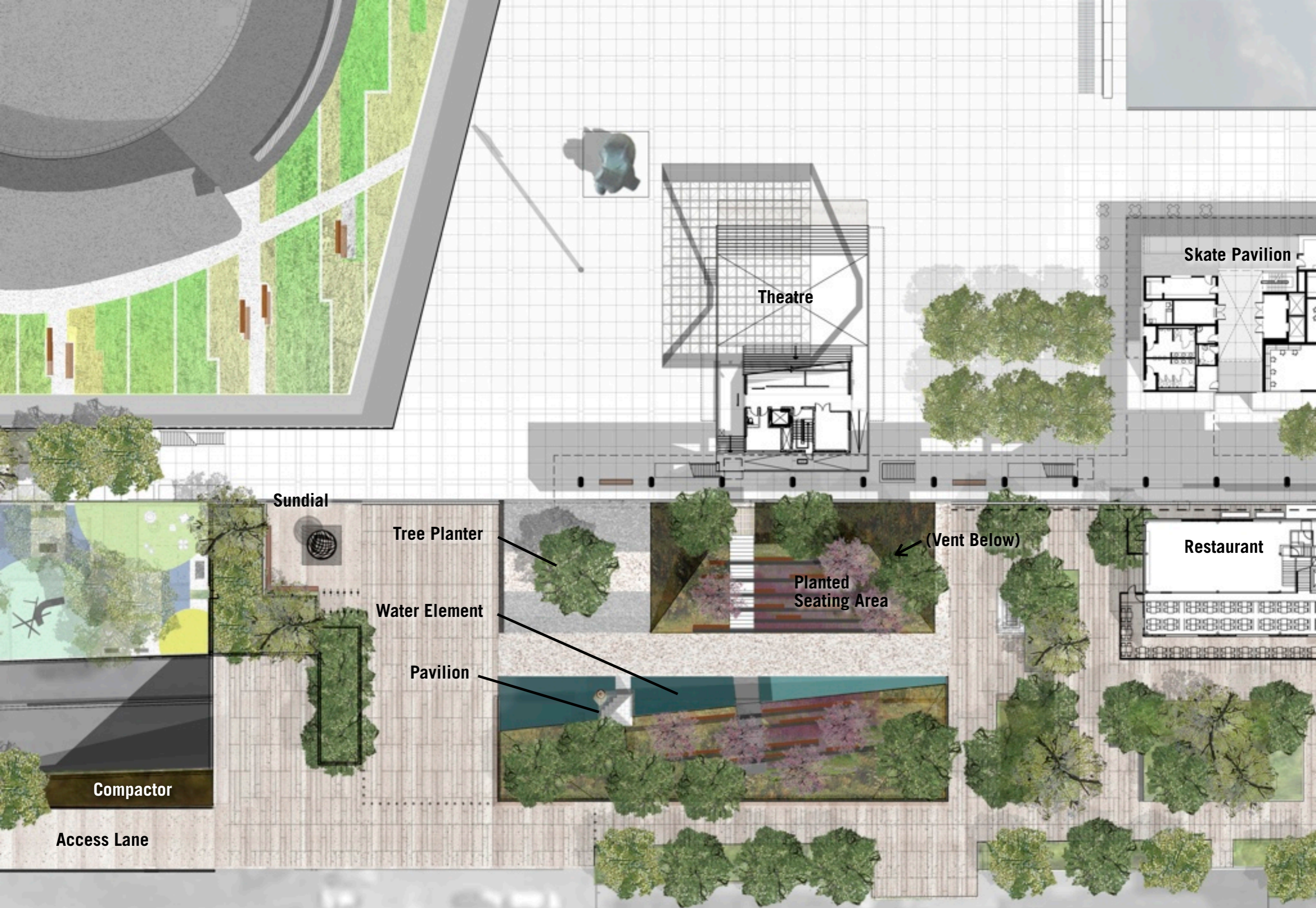
Within the larger square, the Peace Garden would be a focal point framed by the ramped approach to the Council Chamber, the reflecting pool, and the three large scale arches. It would be surrounded by major pathways yet, by enlarging the existing flower bed in its present position, would not disturb the everyday workings of the Square. In addition to its ceremonial role, the Peace Garden offers a place for repose and contemplation within the larger square.

The plan form of the Peace Garden reflects the circular form of City Hall with the two towers surrounding the Council Chamber, while the shelter element would relate to Old City Hall through its use of stone and a familiar roof line. The relationship of this memorial to Nathan Phillips Square is complementary to the relationship of the Cenotaph to Old City Hall, each crystallizing the universal concern for peace.









Theatre

Skate Pavilion

Restaurant

Sundial

Tree Planter

Water Element

Pavilion

(Vent Below)

Planted Seating Area

Compactor

Access Lane

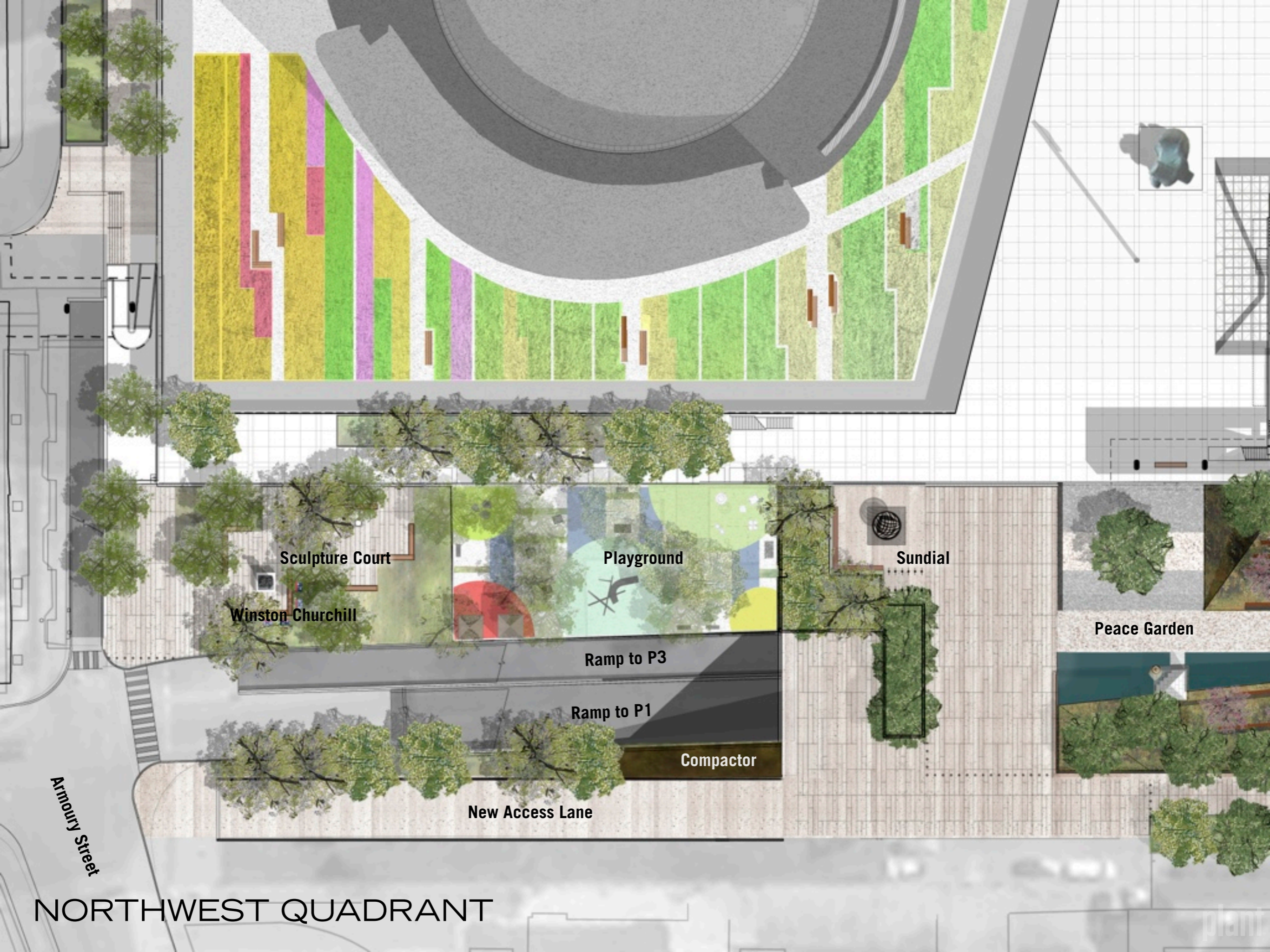
Entry to LSUC
Osgoode Hall

PEACE GARDEN PLAN



VIEW OF PEACE GARDEN FROM THE NORTH

NORTHWEST QUADRANT



Armoury Street

NORTHWEST QUADRANT

Sculpture Court

Winston Churchill

Playground

Sundial

Peace Garden

Ramp to P3

Ramp to P1

Compactor

New Access Lane



VIEW FROM CHESTNUT STREET



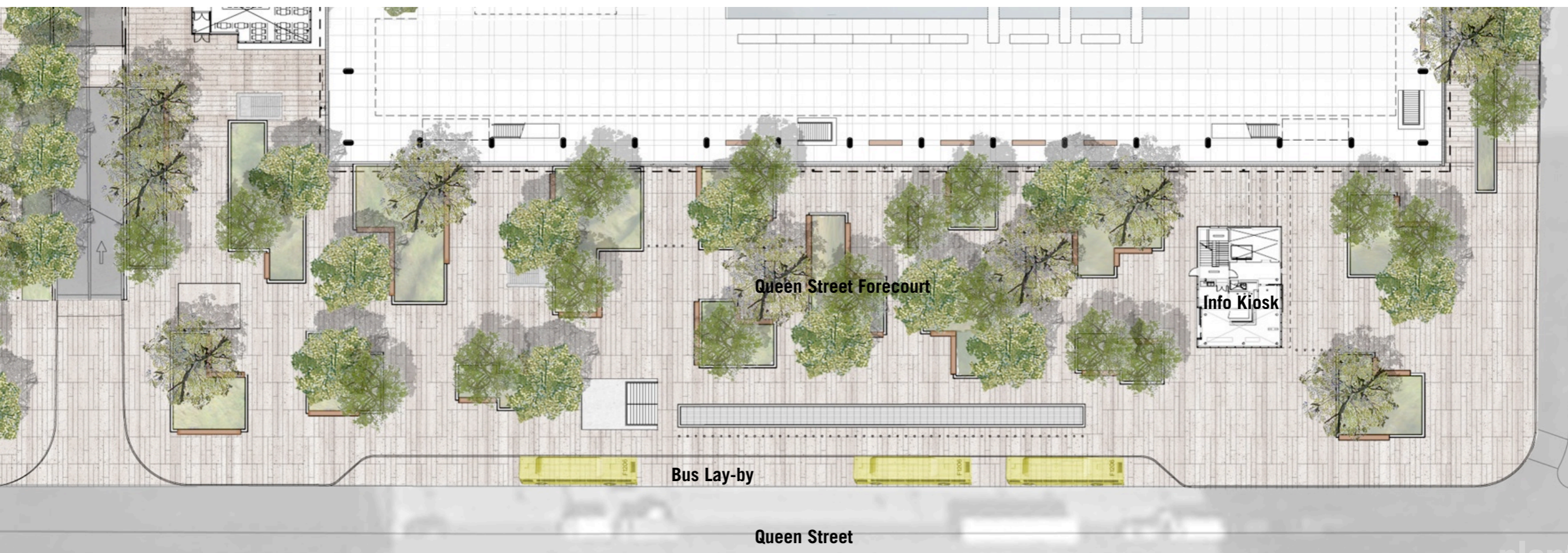


WINSTON CHURCHILL
1874-1965



QUEEN STREET FORECOURT









VIEW OF RESTAURANT FORECOURT



THE FUTURE







The Silver Centre

STATION

plant

DO IT FOR THE KIDS

Ford, the only honourable thing: RESIGN!

FORDS

GETS THE MAYOR IT DESERVES

RESIGN

NOW

OF FORDINATION IS
A DRUNKEN STUPOR

LIAR

Mayor Ford,
You are turning
the city you claim
to love into a JOKE!

Do the city a favour
and RESIGN NOW!

FORD DONT REPRESENT
YOU ARE A ME!!

Dear Mr. Ford
I think it may be time
For you to Leave. Your
Homophobia is not welcome
in my city. Get out.

Thanks



IF YOU LOVE US... LEAVE

embarrassment

TORONTO DESERVES
AN HONEST MAYOR



DO IT FOR THE KIDS!

RESIGN!

RESIGN!

RESIGN!

RESIGN!

RESIGN!

RESIGN!

RESIGN!

DO IT FOR THE KIDS!

RESIGN!

RESIGN!

RESIGN!

RESIGN!

RESIGN!

RESIGN!

RESIGN!

RESIGN!

Our CITY is more important than our MAYOR!

GET OUT!

KEEP YOUR CRACK WE DON'T WANT YOU BACK

DO THE RIGHT THING

RESIGN!

RESIGN!

RESIGN!

Respect OUR CITY!

GET OUT!

KEEP YOUR CRACK WE DON'T WANT YOU BACK

DO THE RIGHT THING

RESIGN!

RESIGN!

RESIGN!

WAY TO GO PARTY MAYOR!

RESIGN!

KEEP YOUR CRACK WE DON'T WANT YOU BACK

DO THE RIGHT THING

RESIGN!

RESIGN!

RESIGN!

RESIGN!

NEVER TRUCK FOOTBALL

TAXPAYER

I WOULD LIKE YOU TO RESIGN

RESIGN!

RESIGN!

RESIGN!

TRUCK FOOTBALL

TAXPAYER

I WOULD LIKE YOU TO RESIGN

RESIGN!

RESIGN!

RESIGN!





