

Snow removal in Saint-Laurent

IT'S EVERYBODY'S BUSINESS



ville.montreal.qc.ca/deneigement

MTL_Circulation

311

Info-remorquage : 514 872-3777

The Borough

Throughout the winter months, the Voirie de Saint-Laurent team continues to be on alert 24/7.

It oversees snow removal from the 380 km of streets on the territory quickly and effectively with its high performance equipment, prioritizing major arteries, bus stops, schools, healthcare establishments and daycare centres. It also ensures that it sustains a quality environment by employing sound ecological practices.

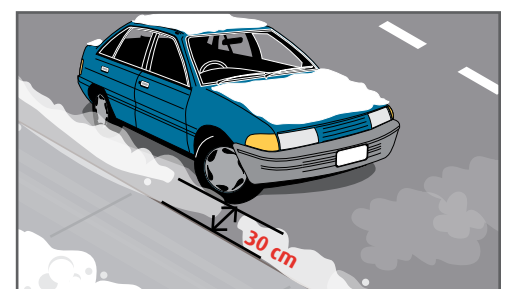
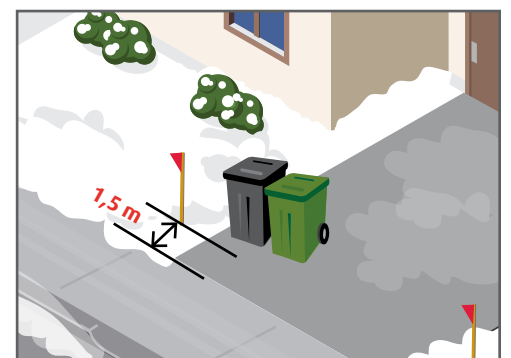
In addition, the Borough is one of the few to participate in the **Jessica Campaign** by outfitting its heavy vehicles with lateral side guards to protect pedestrians and cyclists.

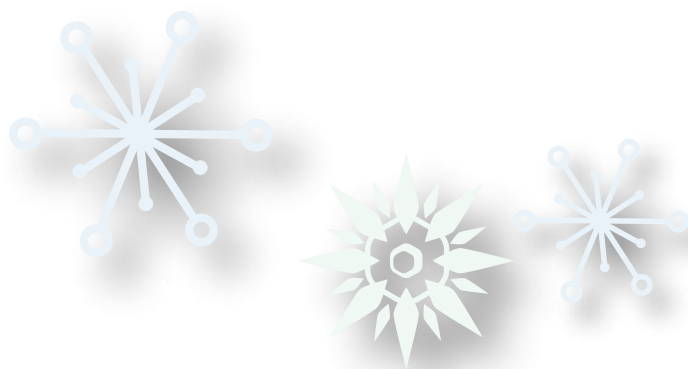


Citizens

Snow-removal is an activity where the valued cooperation of residents can make a real difference. That's why we recommend following these steps:

- Pay attention to special signs.
- Place waste and recycling bins at the entrance to the driveway, as close as possible to the street, never on the sidewalk or snowbank (or wait for the next collection if your bins are not full).
- Place stakes along the edge of the property a minimum of **1,5 metre** from the inside edge of the sidewalk.
- Maintain a minimum **30 centimeter** space between the edge of the sidewalk and the parked vehicle in order to allow snow removal vehicles to access the sidewalks (including folding in the side-view mirrors).





BYLAWS

For residential properties that have sufficient space for snow disposal, it is **against the law to dump snow on public property.**

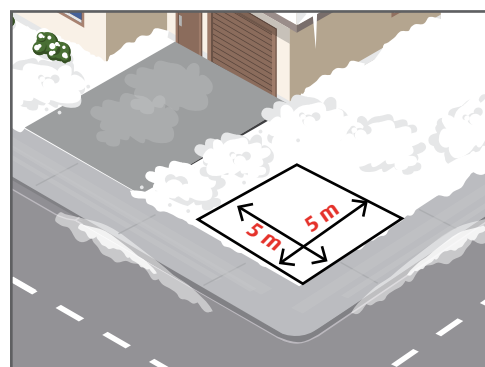
For residential properties where space on private property is insufficient, snow **can be dumped in the street**, prior to snow removal operations being carried out as long as the following conditions are met:

- Snow may be dumped on the edge of the street in front of the owner's building, on the side of the street where the building is located.
- Dumped snow must not impede pedestrian or vehicle traffic, or block access to a building or driveway.
- The height of snow banks that are created must not exceed **2 metres** from the curb and sidewalk.



BANNED CONDUCT

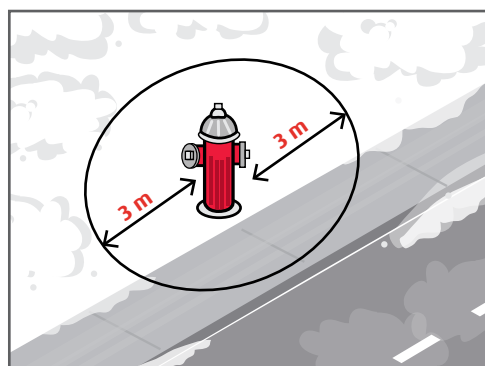
At all times, it is against the law to dump snow:



- less than **5 metres** from an intersection



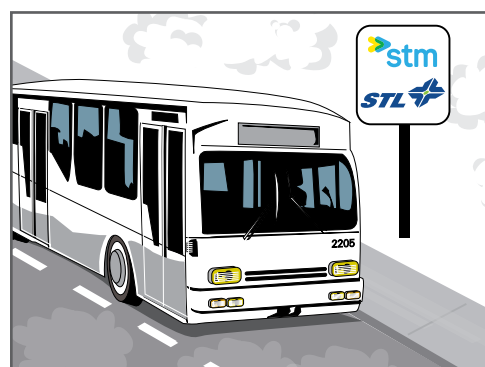
- in front of institutional buildings



- within a **3 metres** radius of a fire hydrant



- in front of a space reserved for persons with limited mobility



- in front of a bus-stop zone

TO SUMMARIZE, DURING SNOW REMOVAL PERIODS

Seek information

- about the weather conditions
- about school closings

Consider

- public transit to reach your destination

Get equipped

- with winter tires from December 15 to March 15
- with snow-removal equipment for your entrance or vehicle

Comply with

- parking rules, and move your vehicle on time

Make sure

- snow removal equipment has an unobstructed path
- you are vigilant and visible

